



# **Punyashlok Ahilyadevi Holkar Solapur University**

## **Criterion VI – Governance, Leadership and Management** **6.1 Institutional Vision and Leadership**

<b>Metric No.</b>	
<b>6.1.1</b>	<b>The institution has a clearly stated vision and mission which are reflected in its academic and administrative governance</b>

**Response:**

## Vision

Enrich research, teaching skill and employability of the students with the execution of best practices

---

## Mission

Empower students and teachers in various fields on the basis of global and local resources by enriching power within them.

**Punyashlok Ahilyadevi Holkar Solapur University Solapur**  
**Vision, Mission and Goals**

**VISION**

Enrich research, teaching skill and employability of the students with execution of best practices.

**MISSION**

Empower students and teachers in various fields on the basis of global and local resources by enriching power within them.

## GOALS

- To continue to improve the quality of the undergraduate and postgraduate courses that prepares our students for professional life, leadership and citizenship in a changing world.
- To make special efforts to provide access to higher education to economically challenged and underprivileged sections of the society.
- Optimize the usage of resources and infrastructure in an integrated fashion to improvise, enhance and strengthen the students' faculties.
- To produce global student with Indian ethos.
- To inculcate self-discipline and high ethical standards, among students, staff, faculty and societal individuals.
- To create a pool of self-motivated and dedicated researchers.
- Provide the facilities and support for its staff to take up innovative methods of teaching in accordance with the developments in the academic world and also take care of the development in industry and commerce.
- To transform the 'Student' into "Knowledge Professional" empowered with scientific intellect, entrepreneurial skills, and innovation, who have learnt their skills in a highly competent environment under the guidance of research oriented and skilled Professors.
- To create an ambience for learning and scholarship.
- To become a nationally renowned Centre of Excellence in teaching, learning, research and extension activities, beneficial to the current and forth coming generations.

## Library Committee

Sr.No	Name	Designation
1)	Dr. Smt. Murnalini M. Fadnavis, Hon'ble Vice-Chancellor, Punyashlok Ahilyadevi Holkar Solapur University, Solapur.	Chairman
2)	Smt. Yogini Ghare, Registrar, Punyashlok Ahilyadevi Holkar Solapur University, Solapur.	Member
3)	CA. S. H. Shah, Finance & Accounts Officer, Punyashlok Ahilyadevi Holkar Solapur University, Solapur.	Member
4)	Principal Dr. D.S. Tikate, Deshbhakt Sambhajirao Garad College Mohol, Solapur.	Member
5)	Prof. Dr. B. M. Pange, Ex. Librarian & HOD, Jaykar Library, Savitribai Phule Pune University, Pune.	Member
6)	Mrs. Suhasini Shah, Director Precision Industries, Solapur.	Member
7)	Dr. D.D. Kulkarni, Assit. Professor, Shool of Earth Science.	Member
8)	Prof. Dr. G.S. Kamble, I/C Director, Knowledge Resource Centre, Punyashlok Ahilyadevi Holkar Solapur University, Solapur.	Secretary

## RUSA

### RUSA Committee

Sr.No	Members Name	Designation
1	Vice Chancellor PAH Solapur University, Solapur	Chairman
2	Prof. Dr. V. B. Ghute, Director, Physical of Computational Science, PAH Solapur University, Solapur	RUSA Co-ordinator
3	C. A. Shenik Shaha Account & Finance Officer	Member
4	Shri. Girish Kulkarni University Engineer	Member
5	Smt. Yogini Ghare Registrar, PAH Solapur University, Solapur	Member Secretary

RGSTC  
RGSTC Committee

Sr.No	Members Name	Designation
1	Vice Chancellor	President, RGSTC, PAH Solapur University, Solapur
2	Shri. Ajit Patanakar	Advisor, RGSTC, Mumbai
3	Prof. Dr. V. B. Ghute	Member, RGSTC, PAH Solapur University, Solapur
4	Dr. P. M. Pawar	Member, RGSTC, Prof. SVERI Collage of Engineering, Pandharpur.
5	Prof. Dr. Vikas Patil	Co-ordinator, RGSTC PAH Solapur University, Solapur

# IPR Committee

Sr. No.	Name	Designation
1.	Vice Chancellor	Chairman
2.	Prof. Dr. Vikas Patil	Member Secretary
3.	Prof. Dr. V. B. Ghute	Member
4.	Prof. R. B. Bhosale	Member
5.	Dr. Maya Patil	Member
6.	Dr. Prakash Vhankhade	Member
7.	Dr. Krushnamurthi	Member
8.	Dr. Arghya Roy	Member
9.	Dr. Ushushi Guha	Member
10.	Dr. Sanjeev Patankar	Member
11.	Dr. M. G. Mali	Member
12.	Ms. Neha Pujari	Member
13.	Ms. Ashwini Narale	Member
14.	Mr. Ravindra Bagle	Member



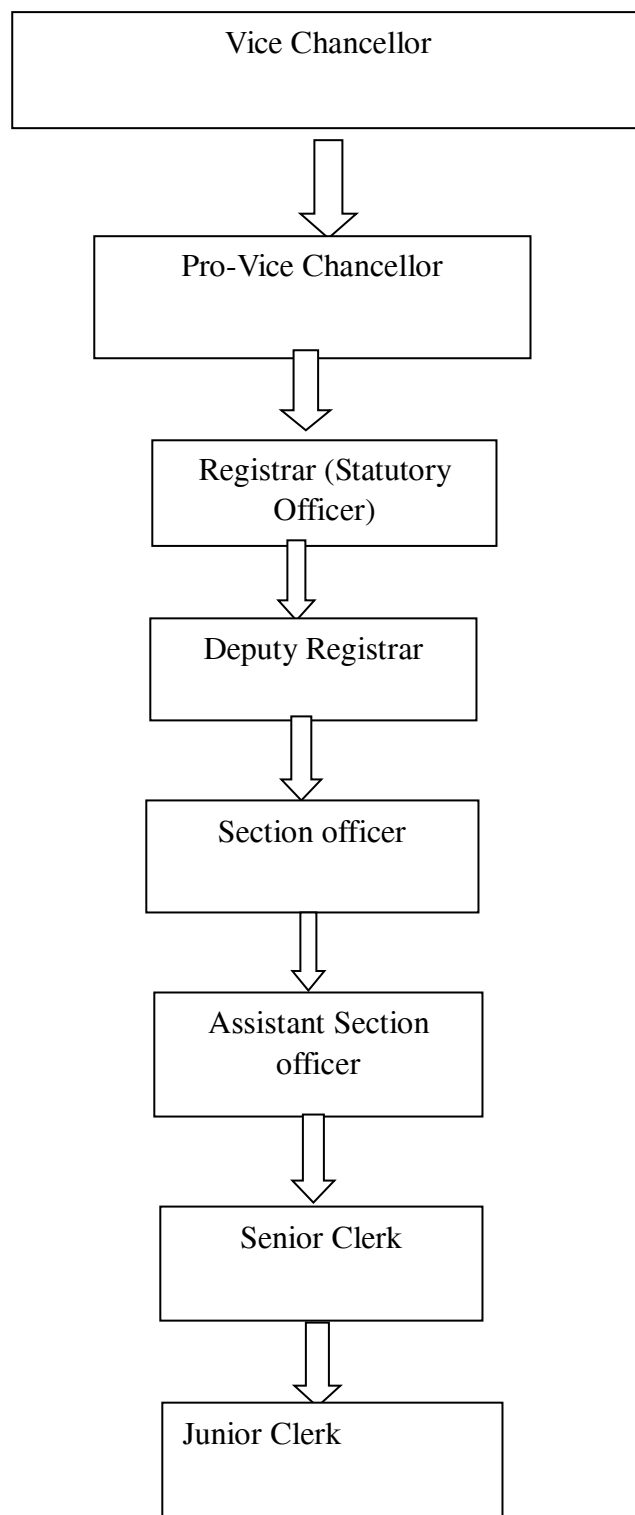
## International Cell

### International Cell Committee

Sr. No.	Name	Designation
1.	Vice Chancellor	Chairman
2.	Prof. Dr. Vikas Patil	Member
3.	Dr. A. S. Lawand	Member
4.	Dr. Maya Patil	Member
5.	Dr. D. D. Kulkarni	Member
6.	Mr. C. G. Gardi	Member
7.	Dr. S. D. Raut	Coordinator

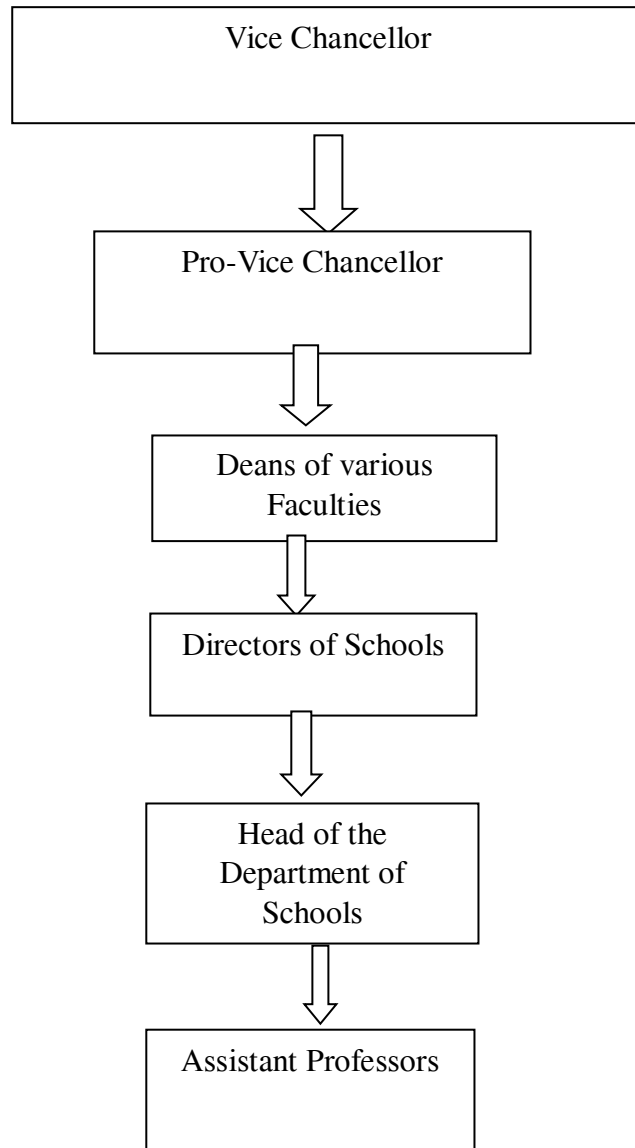
Punyashlok Ahilyadevi Holkar Solapur University Solapur

Non-Academic Flow Chart



Punyashlok Ahilyadevi Holkar Solapur University Solapur

Academic Flow Chart





Prospectus 2021-22

# PUNYASHLOK AHILYADEVI HOLKAR SOLAPUR UNIVERSITY



**Post Graduate Course 2021-22**

**For More Details :** <http://www.sus.ac.in/>  
<https://su.digitaluniversity.ac/>

## Table of Contents

<b>MESSAGE FROM THE DESK OF THE VICE-CHANCELLOR.</b>	<b>2</b>
<b>Solapur - The Developing Smart City of Maharashtra</b>	<b>4</b>
<b>About Punyashlok Ahilyadevi Holkar Solapur University</b>	<b>5</b>
<b>The School System</b>	<b>6</b>
<b>School of Chemical Sciences</b>	<b>8</b>
<b>School of Physical Sciences</b>	<b>12</b>
<b>School of Earth Sciences</b>	<b>19</b>
<b>School of Computational Sciences</b>	<b>25</b>
<b>School of Social Sciences</b>	<b>30</b>
<b>School of Commerce and Management</b>	<b>35</b>
<b>School of Technology</b>	<b>38</b>
<b>School of Languages and Literature</b>	<b>42</b>
<b>School of Performing Arts and Fine Arts</b>	<b>52</b>
<b>School of Allied Health Sciences</b>	<b>54</b>
<b>School of Life Sciences</b>	<b>57</b>
<b>Knowledge Resource Centre (University Library)</b>	<b>60</b>
<b>Facilities in the University Campus</b>	<b>63</b>
<b>Admission Rules</b>	<b>65</b>
<b>Nature of question paper for entrance test of M. Sc.Courses</b>	<b>71</b>
<b>Eligibility required for Various Courses</b>	<b>72</b>
<b>Schedule of Entrance Examination</b>	<b>75</b>
<b>Admission Schedule</b>	<b>78</b>
<b>The Credit System</b>	<b>80</b>
<b>An overview of the courses/ programs at the University schools</b>	<b>82</b>
<b>Certificate Courses Under University Skill Development Centre</b>	<b>84</b>
<b>P. G. Courses offered at Affiliated Colleges</b>	<b>85</b>
<b>Phone Numbers for Contact</b>	<b>87</b>
<b>Fees</b>	<b>89</b>

## MESSAGE FROM THE DESK OF THE VICE-CHANCELLOR.



**Prof. Dr. (Smt.) Mrunalini Fadnavis**  
**Hon'ble Vice-Chancellor**

Dear Students, I would like to extend my hearty welcome to you all who are seeking admissions to various Post Graduate Programmes of Punyashlok Ahilyadevi Holkar Solapur University, Solapur..!!

Punyashlok Ahilyadevi Holkar Solapur University is young (Established on 01-08-2004); received 2F and 12B recognition from UGC, New Delhi in 2013; NAAC accreditations with 'B' grade having CGPA 2.62 in 2015 and is developing with commitments to competitive, professional quality and Academic excellence in higher Education and Research-Development in emerging areas. Presently university is preparing for the second cycle of NAAC accreditations. We have talented, dedicated faculties and researchers mentoring the younger generation students. They impart application oriented skills at par with International standards, so as to meet the challenges of Global scenario in innovative, professional job oriented courses and prepared to get advantages of global opportunities available in the 21<sup>st</sup> century. In order to promote excellence in study and research and to ensure equitable development, we encourage and equip the aspiring students to succeed in their studies. On the basis of academic, research and extension activities performance, the University has received appreciation from the Department of Higher Education, State Government and UGC, New Delhi. Recently, the University awarded the International UI Green Metric Award 2020 for Green, Ecofriendly and Sustainable Campus. The university research work and faculties listed in the Global ranking. The University provides a platform for enhanced research interaction with various research and academic institutions; the faculty and students to get publications in top ranked journals. In the pretext of the new National Education Policy 2020 (NEP) that will come into effect, our University has already stepped into action and



initiated several measures in the line of the NEP guidelines. Our aim is to learn, acquire and understand Society with new dimensions and accept innovative education policy.

Our University always plans to have updated new flexible, dynamic and competitive programs / courses under CBCS syllabi. With the involvement of all the stakeholders namely, students-parents, teaching faculty, Non-teaching staff, College Principals, Managements, authorities of various bodies, Governments -State & Central, University Grants Commission, New Delhi; Industries and Chamber of Commerce; and the People of the Society, we shall try our best to provide the best physical and infrastructure facilities for the allround developments of the students. The new mantra of higher education of P. A. H. Solapur University is “OUT OF BOX” design of course content and formation of participatory activities. Providing job opportunities through Skill-based Courses to the younger generation is the most important act for us. In the present day context, it is the need of Solapur, State of Maharashtra and of the country to provide innovative ideas to the students through university education. It will enhance the workforce for Solapur and empower the students to work for the development of the society. Development of good human beings, earning money with hard work, set up of business, entrepreneurship awareness etc. are part of our Post Graduate and Skill Development curricula.

The current pandemic has changed the entire landscape of education. Classroom teaching has been taken to digital platforms and innovative pedagogies are being used by the teachers to make learning engaging for the students. During the pandemic, the university teachers have contributed massive e- content for the students and other learners. With the directions of the State Ministry of Higher and Technical Education Department, Government of Maharashtra, the university has launched You-tube channel and set-up a digital record library which currently has more than 500 videos, webinar records, E-Conferences, Workshops, meetings etc on diverse subjects for the students. The university has moved a step forward on these lines. Considering the new development agenda of our country, the areas like modern Information technology, agriculture, art and culture, sports, yoga, naturopathy, textile, disaster management, earth and environment and life sciences, etc. are added in the university’s day to day systems for effective outcomes.

Inquest to quality, Punyashlok Ahilyadevi Holkar Solapur University puts extra efforts in reaching the unreached rural youth. The University is committed to encourage individuals from socially challenged sections namely, SC, ST, minorities, NT, OBC, EBC, women, physically challenged students, thereby increasing the Gross Enrollment Ratio; alleviate backwardness and improve quality in higher education. The University aspires for academic integrity, intellectual and critical abilities of students to build competencies so that they become part of the modern industrial society acquiring need based social, scientific and technological education. The University aims at the holistic development of the students with a motto of “*Vidyaya Sampannatta*”. Punyashlok Ahilyadevi Holkar Solapur University has placed its bet on the education of youth as it is the best possible investment in human resource for development of a society and in turn the nation.

It is my pleasure to welcome you all to Punyashlok Ahilyadevi Holkar Solapur University and invite you to embark on a lifetime partnership with the University.

**Prof. Dr. (Smt.) Mrunalini Fadnavis**  
Hon’ble Vice-Chancellor

## Solapur - The Developing Smart City of Maharashtra

Solapur District was ruled by various dynasties such as Andhrabhratyas, Chalukayas, Rashtrakutas, Yadavas, Bahamanis and many others from the historical period to pre British time. It is the fourth large district in Maharashtra in terms of land area and seventh large in terms of population. Solapur is a melting pot or a confluence point of Marathi, Telugu and Kannada languages and cultures.

The district has many religious places like *Shri. Siddheshwar* temple in Solapur city. The “*Nandi Dhwaja*” procession on the day of *Makar Sankranti* is attended by millions of devotees. Pandharpur, the holiest place in Maharashtra, known as *Dakshin Kashi* with its “*Vitthal-Rukhumai*” temples on the banks of the *Chandrabhaga* River, is only 70 km from Solapur city. Akkalkot, just 38 km from Solapur is another holy place as it was the abode *Shri. Akkalkot Swami Samarth*. Similarly, the well known pilgrimage centre Tuljapur is 40 km away from Solapur city. Nannaj, 18 km from Solapur city is the habitat of an endangered avian species called ‘Maldhok’. During Indian independence movement, the people of Solapur enjoyed full freedom on 9, 10 and 11 May 1930. Freedom Fighters of Solapur hoisted the national flag on the Municipal Council Building on 6 Apr. 1930. However, this resulted in the executions of Shri Mallappa Dhanshetti, Shri Kurban Hussain, Shri Jagannath Shinde and Shri Kisan Sarda, who were hanged to death on 12 January 1931. For that reason, the city is being recognized as “The City of Martyrs”. As a mark of respect to these freedom fighters their statues have been installed in the heart of the city.

In British India period, Solapur had famous textile industries. High quality Chaddars (Bedsheets or bed-covers) are made in Solapur, which have earned fame and reputation for the novel designs and durability. Solapur Chaddars and Towels are famous not only in India but also in other countries.

Solapur city has been selected under the scheme of Smart cities, Govt. India due to its strategic geographical position, cultural heritage, textile industries, educational initiatives, sports activities, agricultural productivities and connectivities, etc. In order to change the features of the city, massive infrastructure developments and reorganization of the city components have been initiated in recent times. This will enable the city as new hubs in several traditional and advanced avenues.



## About Punyashlok Ahilyadevi Holkar Solapur University

Punyashlok Ahilyadevi Holkar Solapur University is a young state University of Maharashtra state, established on 1st August 2004. The Formation of the University at Solapur was a long cherished desire of the people of this region and the people of the district have an emotional attachment to the University since its inception. Earlier to the formation of University, Solapur city had a P. G. Center of Shivaji University, Kolhapur since 1984. The center for P. G. Studies had three postgraduate science departments housed in two buildings and a central Library building on its campus that spread over a total area of 37 acres. Seven postgraduate courses were offered in that P.G. centre.

Punyashlok Ahilyadevi Holkar Solapur University is now located on the outskirts of Solapur city about 10 km from the main city, on the national highway NH-09 towards Pune. The proximity with the national highway provides good connectivity. It is a matter of great pride that the university has made big strides within a short span. Nine new buildings, for School of Computational Sciences, School of Social Sciences, School of Earth Sciences, Central Instrumentation centre, Girls' hostel with an accommodation facility for 200 girls; Boys' hostel with accommodation for 100 boys, Rector's bungalow, University Guest House and VIP Bungalow are available in the campus.

The University is relentlessly putting its endeavors in enhancing the standards in teaching, research, extra-curricular and sports activities. The University has introduced new schools like School of Commerce and Management, School of Languages and Literature, School of Performing Arts and Fine Arts, School of Allied Health Sciences, School of Technology, School of Life Sciences and many new skill-based courses in recent times. At the same time, some of the existing courses are modified so as to strike the right balance between the theoretical and applied components in the curriculum. Bridge courses are initiated by the schools to admit students from other faculties to the mainstream courses. There is a strong research pursuance and publications carried out by each school. The University is committed to the all round developments of students. As a result, a number of students have been bringing laurels at the state and national youth festivals, sports and research events.

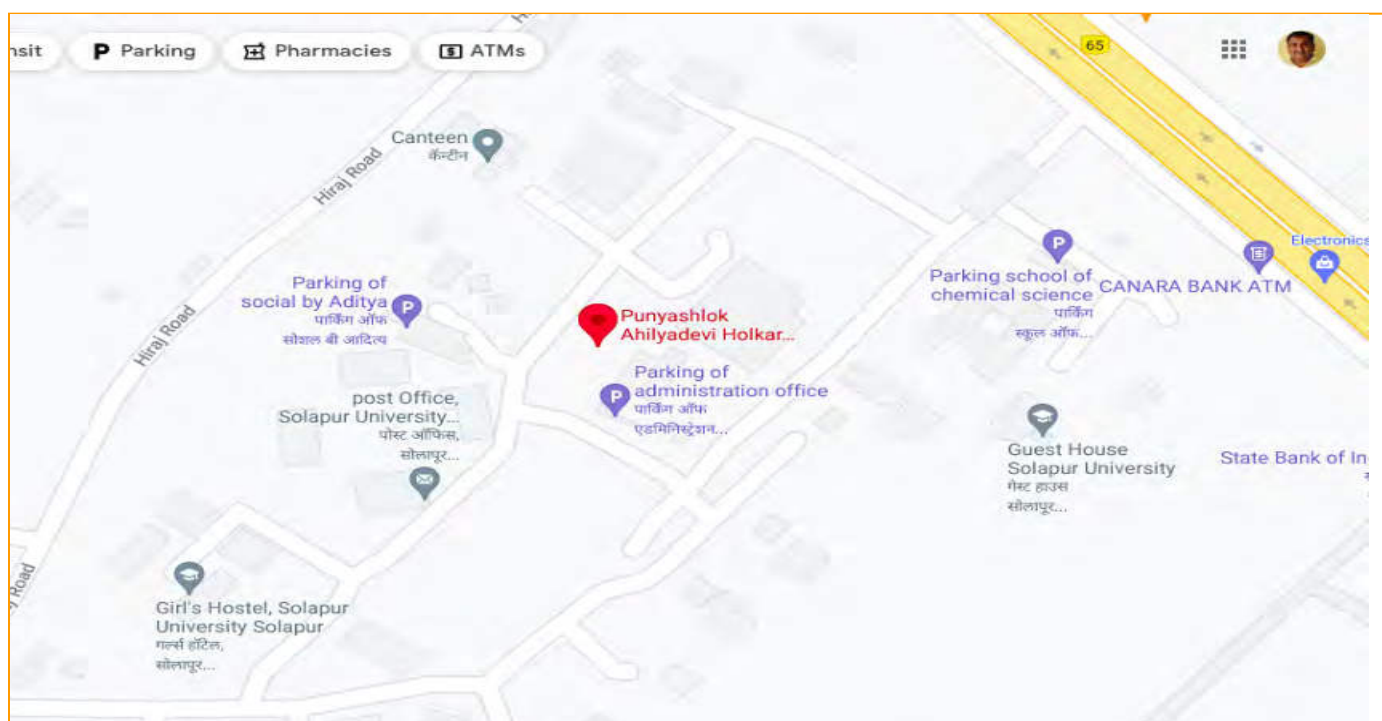
The University has been regularly organizing State level, inter University level and international seminars, conferences, sports and research events. The University has developed its sports facilities and health center in the extended campus. Construction of the new Administrative and examination building has started at the state Govt allocated approx. 500 acre land adjacent to the old campus. The installation of an impressive Horse riding statue of Punyashlok Ahilyadevi is in progress at the new campus too.

## The School System

The University has adopted the school system and brought various departments under the umbrella of eleven schools. The basic motive behind the School concept is optimal utilization of manpower, infrastructure and other resources available with the University. The University Grants Commission has recommended the inception of the School System for institutes of higher learning to provide academic flexibility and horizontal mobility to the graduate and postgraduate students. Following are the schools and departments:

Sr. No.	Name of the School	Name of the Department
1	<a href="#">School of Chemical Sciences</a>	Department of Chemistry (Polymer, Industrial, Organic & Medicinal Chemistry)
2	<a href="#">School of Physical Sciences</a>	1. Department of Physics 2. Department of Electronic Science
3	<a href="#">School of Earth Sciences</a>	1. Department of Applied Geology 2. Department of Environmental Science 3. Department of Geoinformatics
4	<a href="#">School of Computational Sciences</a>	1. Department of Computer Applications 2. Department of Computer Science 3. Department of Mathematics 4. Department of Statistics 5. Department of Bio-Statistics
5	<a href="#">School of Social Sciences</a>	1. Department of A.I.H.C & Archaeology 2. Department of Economics 3. Department of Rural Development 4. Department of Journalism and Mass Communication
6	<a href="#">School of Commerce and Management</a>	1. Department of Commerce 2. Department of Management

Sr. No.	Name of the School	Name of the Department
7	<a href="#">School of Languages and Literature</a>	<ol style="list-style-type: none"> <li>1. Department of Marathi</li> <li>2. Department of Hindi</li> <li>3. Department of English</li> <li>4. Department of Sanskrit</li> <li>5. Department of Urdu</li> <li>6. Department of Kannada</li> <li>7. Department of Pali</li> <li>8. Department of Prakrit</li> </ol>
8	<a href="#">School of Performing Arts and Fine Arts</a>	<ol style="list-style-type: none"> <li>1. Department of Music</li> <li>2. Department of Dramatics</li> <li>3. Department of Tabla</li> </ol>
9	<a href="#">School of Technology</a>	Department of Cosmetic Technology
10	<a href="#">School of Allied Health Science</a>	<ol style="list-style-type: none"> <li>1. Department of Dietetics and Nutrition</li> <li>2. Department of Yoga</li> <li>3. Department of Acupressure</li> </ol>
11.	School of Life Sciences	<a href="#">Department of Microbiology</a>



For Map Direction: <https://goo.gl/maps/iYTBAAdTQujCUZF6E6>

## School of Chemical Sciences



The Department of Chemistry was established in the PG Centre of Shivaji University at Solapur in 1984. It was the first institute in Maharashtra to offer M.Sc. course in Polymer Chemistry since then. After the creation of Solapur University (present PAH Solapur university), the department was renamed as School of Chemical Sciences with four specializations like Polymer Chemistry, Industrial Chemistry, Organic Chemistry and Medicinal Chemistry in the M.Sc. Program. M.Phil. and Ph.D. programs are also conducted in the school. The school building measuring about 30,000 sq. ft. built-up area has well furnished and equipped classrooms, laboratories, seminar hall and conference hall.



### Some Highlighted aspects

- Various companies viz. Kansai Nerolac Paints Ltd., Gharda Chemicals Ltd., Cipla Ltd., Smruthi Organics Ltd., Asian Paints Ltd., Life Line Industries Ltd., URDIP, Pune, Syngene International Ltd, A Biocon Company, Bangalore, Balaji Amines Ltd., Solapur, Vikalp Chemtech Pvt.Ltd. Solapur, Raichem Medicare Pvt. Ltd., Raichur etc are invited to hold campus interviews.
- Many of our M. Sc. (Polymer, Organic and Industrial Chemistry) students were selected on Fellowship to get admission to Ph. D. / PDF courses in countries namely, U. K., Germany, Italy, Netherlands, USA, South Korea and Japan etc.
- Highest rate of Passing SET/NET/GEAT examination. About 60 Students qualified for the SET/ NET/ GATE examination in the School from 2010 Comparatively other Universities in Maharashtra.
- Students awarded gold medals (Rank holders) of this School from 2010. Three Gold Medals are Kept for Chemistry Students.
- Number of Ph.D. Students doing Ph.D. under various fellowships like DRF, UGC-CSIR, Moulana Azad for minority students.

**Courses Offered:** The School of Chemical Sciences cater the needs of students who Wish to pursue higher education to obtain M. Sc., and Ph. D. in the specializations shown below:

Sr. No.	Name of the Specialization	Name of the Course	Intake
1.	Polymer Chemistry	M. Sc. Chemistry ( Polymer Chemistry)	20
2.	Industrial Chemistry	M. Sc. Chemistry (Industrial Chemistry)	25
3.	Organic Chemistry	M. Sc. Chemistry (Organic Chemistry)	40
4.	Medicinal Chemistry	M.Sc. Chemistry (Medicinal Chemistry)	20
5.	Analytical Chemistry	Six Months Certificate Course Instrumental Methods of Analysis	50

**Eligibility:** Students with B.Sc. Chemistry (at Principal/ Subsidiary level) of any UGC recognized University is eligible. Preference will be given to the students with Chemistry as the principal subject.

### **Course Structure:**

**M. Sc. Part I (Polymer Chemistry, Industrial Chemistry, Organic Chemistry and Medicinal Chemistry) : [M. Sc. – I - Common for All Specialization](#) (w.e.f. June 2020-21)**

#### **❖ Teaching Staff:**

Sr. No.	Name of the Faculty	Designation
1.	Dr. R. B. Bhosale	Professor and Director
2.	Dr. A. A. Ghanwat	Associate Professor
3.	Dr. Smt. A. S. Lawand	Assistant Professor
4.	Dr. S. N. Shringare	Assistant Professor
5.	Dr. V. D. Kadu	Assistant Professor
6.	Dr. M. G. Mali	Assistant Professor


In order to support teaching – learning activities, a required number of additional contractual teachers are recruited. Visiting Faculty: Eminent Professors from National Institutes, other Universities, local colleges / institutions are invited to enrich the academic and research perspectives of the students. Eminent Professors from National Institutes, CSIR Laboratories and Universities are invited to enrich the academic perspective of the students.

### **Research Facilities:**

#### **A) Major Areas of Research:**

- Polymer chemistry, polymer synthesis / modification, high temperature resistant polymers, phosphorus / fluorine containing monomers and polymers, utilization of natural resources – like CNSL, castor oil, cellulose etc. Controlled drug delivery systems, liquid crystal polymers, functional polymers, polymer supported ligands, block and graft copolymers, Photoresponsive Monomers and Polymers, Photoresist Materials.



- 
- Development of new synthetic methods, synthesis of bioactive molecules, medicinal chemistry, process development of fine chemicals, drugs /pharmaceuticals ingredients.

**B) Research Activities:**

- One International and two Indian patents are granted.
- Completed Research Projects: Seven major projects sponsored by DST-New Delhi, BRNS–Mumbai, UGC – New Delhi and ISRO.
- One Major Research Project sanctioned by UGC, New Delhi.
- Published several research papers in National and International journals.
- So far 16 students have obtained M. Phil. and 70 students have obtained Ph. D. degree.
- At present 10 Ph. D. and one Postdoctoral student are engaged in the research work.

## School of Physical Sciences



The School of Physical Sciences originated its present identity from the PG centre of Shivaji University, year back to 1984. The School has two departments (Physics and Electronics science), where M.Sc. M.Phil. and Ph.D. programs are conducted. The departments have well equipped instrumental laboratories conducive for imparting general and advanced knowledge in material science, condensed matter, applied electronics and electronics subjects. The School has a strong Alumni to elaborate its credentials; research projects; patents, linkages and contributions in the development of the university. The members of the teaching faculty are actively engaged in the research, administrative endeavours and extension activities. Separate building measuring about 10,000 sq. ft. built-up area houses the departments in the School.

### **Back ground:**

- M. Sc. Physics (Applied Electronics) course was started in 1984.
- M. Sc. Electronic Science course was started in 1997.
- M. Sc. Physics (Materials Science) course was started in 2009.
- M. Sc. Physics (Condensed Matter Physics) -2019.
- M. Sc. Physics (Energy Studies) - 2021
- Separate building for above department admeasuring about 10,000 sq. ft. built-up area.
- Well furnished classrooms, well equipped laboratories and seminar halls, etc.



### Sophisticated and Scientific Instruments:

<ul style="list-style-type: none"><li>● Stylus Surface Profilometer.</li><li>● Impedance Analyzer. (Precision Wayne Kerr, USA), (CH Instruments Auto Lab, The Netherlands.)</li><li>● Electrochemical Workstation.</li><li>● Spectroelectrochemical Multiplexer with EQCM.</li><li>● Simple Spray Pyrolysis Unit.</li><li>● Ultrasonic Spray Pyrolysis Unit.</li><li>● Programmable Electrometer.</li><li>● Spin Coating Unit.</li><li>● Vacuum Coating and E-Beam Evaporation Setup.</li><li>● SHIMADZU UV Spectrophotometer.</li><li>● Hysteresis Loop Tracer.</li><li>● Tektronix Storage Oscilloscope.</li><li>● Programmable Furnaces.</li><li>● HP-LCR-Q 4284 A Meter.</li></ul>	<ul style="list-style-type: none"><li>● BET Surface Analyzer.</li><li>● E-Learning Class Rooms.</li><li>● Microwave Test Bench.</li><li>● HP- 6½ Digital Multimeter.</li><li>● NanoFiber Electrospinning Unit.</li><li>● MATLAB 2013a &amp; LabVIEW 2014 &amp; LabVIEW</li><li>● CST Antenna design software</li><li>● Physical Vapour Deposition.</li><li>● Photo Reactor System.</li><li>● Susceptibility Unit.</li><li>● Thermo Electric Power Setup.</li><li>● Electrical Conductivity, Measurement Unit.</li><li>● Geiger Counting System.</li><li>● UV Visible Photo spectrometer.</li><li>● Various Communication and Instrumentation Kits.</li></ul>
--	--

### Eligibility:

Sr. No.	Name of the Course	Eligibility
1.	i) M.Sc. Physics (Applied Electronics) ii) M.Sc. Physics (Materials Science ) iii) M.Sc. Physics (Condensed Matter Physics) iv) M. Sc. Physics (Energy Studies)	B.Sc. with Physics as Principal Subject
2.	M.Sc. Electronic Science	B.Sc. with Electronics as Principal / B.Sc. Physics with Electronics at subsidiary level/ B. Sc. (ECS)

**Courses Offered:** The School of Physical Sciences covers the need of students who wish to pursue higher education to obtain M. Sc., M. Phil, and Ph. D. in the specializations listed below -

Sr. No.	Name of the Department	Name of the Course	Intake capacity
1.	Department of Physics	M. Sc. Physics (Applied Electronics)	20
		M.Sc. Physics (Materials Science)	20
		M.Sc. Physics (Condensed Matter Physics)	20
		M. Sc. Physics (Energy Studies)	20
2.	Department of Electronic Science	M.Sc. Electronic Science	20

### Course Structure:

- **M.Sc. Part-I Physics (Applied Electronics/ Materials Science/Condensed Matter Physics) :** [Click for Syllabus](#)
- **M.Sc. Part -I - Electronics Science- w.e.f June 2020-21 :** [Click for Syllabus](#)
- **M.Sc. Part-I Physics (Energy Studies) w.e.f. 2021-22**

M.Sc. PHYSICS SEMESTER-I								
Paper Code	Title of the Paper	Semester Examination			L	P	T	Credits
		Theory	IA	Total				
	Hard Core Theory							
HCT 1.1	Mathematical Physics	80	20	100	4	--	--	4
HCT 1.2	Solid State Physics	80	20	100	4	--	--	4
HCT 1.3	Analog and Digital Electronics	80	20	100	4	--	--	4
	Soft Core-Theory (Any one)							
SCT 1.1	Classical Mechanics	80	20	100	4	--	--	4
SCT 1.2	Introduction to Energy Science							
Practical								
HCP1.1	Practical-1: (Based on HCT 1.1)	40	10	50	--	2	--	2
HCP1.2	Practical-2: ( Based on HCT 1.2)	40	10	50	--	2	--	2
HCP1.3	Practical-3: ( Based on HCT 1.3)	40	10	50	--	2	--	2
SCP1.1/ 1.2	Practical-4: ( Based on SCT 1.1/1.2)	40	10	50	--	2	--	2
	Seminar / Tutorial	---	25	25	--	--	1	1
Total for Semester-I		480	145	625	--	--	--	25

M.Sc. PHYSICS SEMESTER-II								
Hard Core Theory								
HCT 2.1	Quantum Mechanics	80	20	100	4	--	--	4
HCT 2.2	Electrodynamics	80	20	100	4	--	--	4
Soft Core Theory (Any One)								
SCT 2.1	Statistical Physics	80	20	100	4	--	--	4
SCT 2.2	Analytical Techniques							
Open Elective Theory (Any one)								
OET 2.1	Fundamentals of Electronics	80	20	100	4	--	--	4
OET 2.2	Conventional & Non conventional Energy							
Practical (Hard and Soft core)								
HCP 2.1	Practical-5: (based on HCT 2.1)	40	10	50	--	--	2	2
HCP 2.2	Practical-6: (based on HCT 2.2)	40	10	50	--	--	2	2
SCP 2.1/2.2	Practical-7: (based on SCT 2.1/2.2)	40	10	50	--	--	2	2
Practical (Open Elective) Any One								
OEP 2.1	Practical-8: (based on OEP 2.1/2.2)	40	10	50	--	--	2	2
OEP 2.2	Practical-4: (based on OEP 2.2)							
	Seminar / Tutorial	--	25	25	--	1	--	1
<b>Total for Semester-II</b>		<b>480</b>	<b>145</b>	<b>625</b>	<b>--</b>	<b>--</b>	<b>--</b>	<b>25</b>

### Teaching Staff :

- The members of the teaching faculty are actively engaged in the research. Have guided more than 72 Ph. D. and 22 M. Phil. students.

Sr. No.	Name of the Faculty	Designation
1	Prof. V. B. Patil	Professor and Director
2	Prof. S. S. Suryavanshi	Professor & Head
3	Prof. B. J. Lokhande	Professor
4	Dr. T. H. Mujawar	Assistant Professor
5	Dr. R. M. Kore	Assistant Professor
6	Dr. V.D. Bachuwar	Assistant Professor
7	Mr. V. M. Prakshale	Assistant Professor
8	Mr. Y. H. Navale	Assistant Professor
9	Mr. S. N. Pawar	Assistant Professor

In order to support teaching – learning activities, a required number of additional contractual teachers are recruited. Visiting Faculty: Eminent Professors from National Institutes, other Universities, local colleges / institutions are invited to enrich the academic and research perspectives of the students.

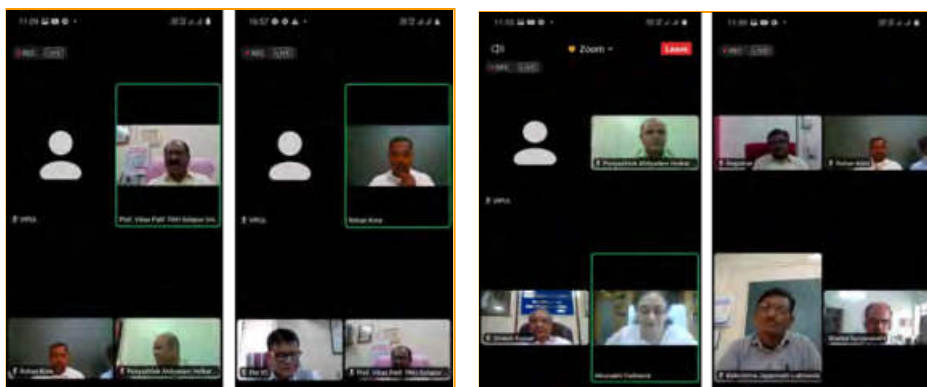
## Research Facilities :

### A) Major Areas of Research:

1. Thin Film Physics and Photovoltaics, Optoelectronics, Sensors and detectors, Nanomaterials, DMS. WSN & ANN
2. Synthesis and characterization of magnetic and ceramic materials, Synthesis and characterization of Gas Sensing materials
3. Inorganic-Organic Nanomaterials, Gas Sensors
4. Synthesis and Characterization of Oxide thin films, Supercapacitors.

### B) Research Activities:

- Number of sponsored research projects: 10
- M. Phil: 22 students completed and Ph. D.: 72 students completed.



National E-Conference (MET – 2021)



ETMN 2017



International Workshop on  
"Untold History of United States and Concept of Nuclear Energy"



**Computer and Internet Laboratory**



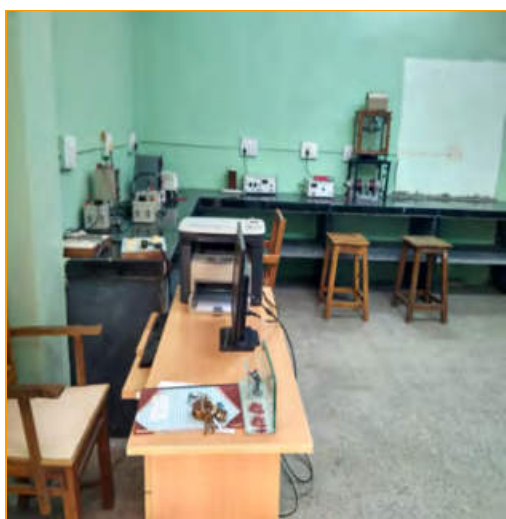
**Physics (Applied Electronics) Laboratory**



**Physics (Materials Science) Laboratory**



**Electronics Science Laboratory**



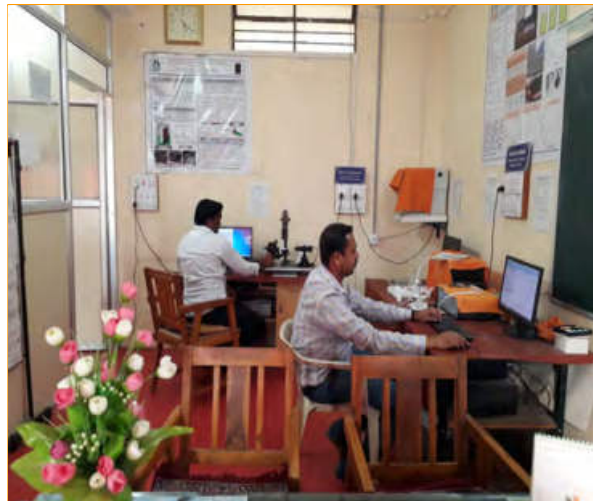


## Physics (Condensed Matter Physics)



**Thermal Evaporation**

## Gas Sensor Laboratory



**Supercapacitors Laboratory**



**Nano-Fiber Electrospinning**

## School of Earth Sciences



In the P.G. Centre of Shivaji University at Solapur, M.Sc. in Applied Geology course started in 1984. In due course of time, M.Sc. Geoinformatics and M.Sc. Environmental Science Courses were added with the renaming of the unit as the School of Earth Sciences. The School has developed very good laboratories, made collections of geological specimens and enhanced research activities. The geological museum in the school is visited regularly by College and School students. Faculty in the school have proven national credit by getting sanctioned R & D projects and consultancy. Organising National and international days of importance and organizing seminars/webinars on different environmental concepts are regular features of the school. The School has instituted Gold medal for first ranker in Geology and first ranker among girl students in Environmental Science.



**Practical Laboratory**



**Wet Laboratory**

## Background

- M.Sc. Applied Geology course was started in 1984 (in P.G. Centre of Shivaji University at Solapur).
- M.Sc. Geoinformatics and M.Sc. Environmental Science Courses were started in 2008.
- Faculty has proven national credit by getting sanctioned R & D projects and consultancy.
- The laboratory facilities are worth praising. The museum has rare geological specimens collected during field seasons spread over two decades.
- The School has instituted Gold medal for first ranker in Geology and first ranker among girl students in Environmental Science.

## Sophisticated Instruments:

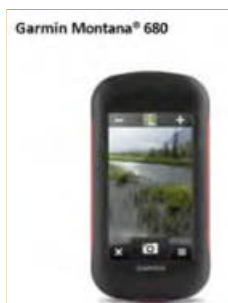
- Mineralogical, Petrological and Paleontological microscopes.
- Heating-Freezing Stage in Geothermometric Laboratory, Isodynamic separator
- Instruments for groundwater exploration, Remote sensing & GIS laboratory
- Multi-parameter Analysis Kit, Signal Stacking 0 Resistivity Meter, Total station
- Ground Penetrating Radar System (GPRS), LCD Projectors and smart classroom facilities
- State of art photographic equipment for field and laboratory studies
- Multispectral Satellite data for the State of Maharashtra
- Specialized software for various applications on GIS platform, Lab for environmental studies consisting of geophysical and geo-chemical infrastructure with related equipment.



### RESISTIVITY METER Model: SSR-MP-ATS



Smart Classroom



GPS





## Courses Offered:

The School of Earth Sciences cater to the needs of students who wish to pursue higher education and obtain M.Sc., M.Phil and Ph.D. in the specializations given below:

Sr. No.	Name of the Course	Eligibility
1.	M.Sc. Environmental Science	Bachelor degree in any science subject. Candidates from the waiting list of chemistry can also be considered. Admission will be on the basis of entrance examination conducted by PAH Solapur University, Solapur.
2.	M. Sc. Geoinformatics	Any Bachelors degree in Science or M.A. geography. Admission will be on the basis of entrance examination conducted by PAH Solapur University, Solapur.
3.	M.Sc. Applied Geology	B.Sc. Geology Principal or as subsidiary subject. Direct Admission will be conducted as per university rules.
4.	Skill Development Center	HSSC, BSc, BA, BSc-Agri, Bcom, BE, BCA, MA, MCom, MSc, JRF, SRF, Ph. D.

## Course structure:

1. M.Sc Applied Geology (CBCS Syllabus) : [Click for Syllabus](#)
2. M.Sc Geoinformatics (CBCS Syllabus) : [Click for Syllabus](#)
3. M. Sc. Environmental Sciences (CBCS Syllabus): [Click for Syllabus](#)

## Teaching Staff:

Sr.No.	Name	Designation
1.	Dr. D. N. Mishra	Hon. Pro-Vice-Chancellor & I/c Director
2	Dr. V. P. Dhulap	Assistant Professor
3	Mr. S. P. Baviskar	Assistant Professor
4	Dr. D. D. Kulkarni	Assistant Professor

In order to support teaching – learning activities, a required number of additional contractual teachers are recruited. Visiting Faculty: Eminent Professors from National Institutes, other Universities, local colleges / institutions are invited to enrich the academic and research perspectives of the students.



**Field work**



**Museum**



**Field Work**



**Computer Laboratory**



**Student Research Laboratory**



**Ground Water Exploration**



## Research Facilities:

- **Major Areas of Research :**

- Ore mineralogical and petrographic studies for Au, Ag, C, Pb, Zn and PGE minerals.
- Ground water exploration, management and modeling in hard rock areas with special reference to rainwater harvesting and artificial recharge.
- Geochemical exploration for base metals and Sn-W-Mo mineralization in South India.
- Fluid inclusion thermobarometry and genesis of ores, rocks and minerals.
- A temporal geophysical resistivity variation studies: A tool for earthquake prediction and disaster management. Development of geochemical tools for ground water exploration.
- Remote sensing studies and environmental management with special reference to west coast regions of India.
- Remote sensing for reclamation of degenerated soils and rehabilitation studies. Remote sensing studies for crop prediction and pest management.
- Environmental Pollution monitoring and control. Environmental Impact Assessment and Environmental Audit for mining and developmental projects.
- Bioremediation and Phyto-remediation for wastewater management.



- **Research Activities:**

- Number of sponsored research projects completed: 06
- Research Innovative Project University Sponsored : 03 (working)
- Ph. D. : 27 Students awarded and 25 Students Working presently
- M. Phil. : 06 Students awarded



## Program & Workshop

Seminal, workshop & guest lecture conducted regularly in school of earth sciences for the development of students on following topics:

- Groundwater Assessment
- GIS Application in Agriculture and Natural Resource (ANR).
- Environmental impact assessment
- Watershed management



## Job Avenue

- Geological Survey of India, Central Groundwater Board.
- Groundwater Survey and Development Agency, GSDA, Govt of Maharashtra
- Central Pollution Control Board (CPCB)
- State Pollution Control Board (MPCB)
- Ministry of Environment and Forest (Centre & State Government)
- Steel Authority of India Ltd
- Mining Industries, Coal India Ltd., Kolar Gold Field, Hutti, Balodota mines.
- National Mineral Development
- Irrigation Department, Directorate of Geology & Mines.
- Hindustan Copper Ltd., Hindustan-Zinc Ltd., ACC, Phosphorite Ltd.
- Bharat Aluminium Co. NALCO.
- National Institute of Oceanography.
- Corporation, Mineral Exploration Corp. Ltd.
- Atomic Mineral Development Oil and Natural Gas Commission, Oil India.
- Geospatial multinational companies.
- Centre for Environmental Education (CEE)
- CSIR and other Environmental Research Organizations / Centers
- Environmental Non-Governmental Organizations (NGO)
- Environmental Research Laboratories and Research Consultancy

# School of Computational Sciences



The School of Computational Sciences began with M.C.A. program in 1998 at the previous PG centre. Later on, M. Sc. (Computer Science), M. Sc. (Mathematics), M. Sc. (Statistics) and M.Sc. (Biostatistics), M. Sc. (Bio-Statistics) courses were started in the School. The academic building is architecturally eye-catching and houses four different departments. The class rooms and laboratories are very well equipped with smart boards, LCDs and advanced configuration computers for teaching – learning and research. The School also organizes Bridge courses for students coming from different backgrounds.

## Background

- M.C.A. course was started in 1998
- M. Sc. (Computer Science) and M. Sc. (Mathematics) courses were started in 2005.
- M. Sc. (Statistics) course was started in 2007.
- M.Sc. (Biostatistics) course was started in 2019.
- Separate building for the school.
- Well furnished classrooms with LCD projectors and well equipped Computer Labs.
- An Internet facility is available to students.
- Offers best teaching and laboratory facilities at moderate fees.



A view of Computer Lab

## Campus Interviews:

- Various companies viz. Endeavour Software Technologies – Bangalore, Cogzy Technologies – Bangalore, 4SPL Pvt. Ltd. – Bangalore, Prometheus Solutions Pvt. Ltd.-Mumbai, Yellowmarkers Technologies – Pune, Every Day IT solutions - Pune, Cross Messenger Pvt. Ltd. - Solapur, Aftek Limited, Solapur, Syneotek Technologies –Pune, V-Midas Technologies - Solapur etc. have conducted interviews for M.C.A., M.Sc. Computer Science and Statistics students and placed them in good positions.

## Courses Offered:

The School of Computational Sciences caters to the needs of students who wish to pursue higher education and obtain M.C.A., M. Sc., and Ph. D. in the specializations given below –

Sr. No.	Name of the Department	Name of the Course	Intake
1	Department of Computer Science	M. Sc. (Computer Science)	20
2	Department of Mathematics	M. Sc. (Mathematics)	50
3	Department of Statistics	M. Sc. (Statistics)	30
		M.Sc. (Biostatistics)	20
4	Department of Computer Applications	M. C. A. ( Master of Computer Applications) (Candidates have to qualify the Common Entrance Test (MAH MCA CET) conducted by the State Government of Maharashtra.)	60

**Course Structure:** CBCS is applied to all the courses under this school from the academic year 2016-17.

1. M. Sc. (Computer Science) : [Click Here for Syllabus](#)
2. M. Sc. (Mathematics) : [Click Here for Syllabus](#)
3. M. Sc. (Statistics) : [Click Here for Syllabus](#)
4. M. Sc. (Biostatistics) : [Click Here for Syllabus](#)
5. M. C. A. (Science) : [Click Here for Syllabus](#)

## Teaching Staff:

For more details-

Sr. No.	Name of the Faculty	Designation	Specialization
1	Prof. Dr. V. B. Ghute	Director and I/c Registrar	Statistics
2	Dr. R. S. Mente	Assistant Professor	Computer Applications
3	Dr. J. D. Mashale	Assistant Professor	Mathematics
4	Mr. A. R. Shinde	Assistant Professor	Computer Science
5	Dr. S. D. Raut	Assistant Professor	Computer Science
6	Mr. C. G. Gardi	Assistant Professor	Statistics

In order to support teaching – learning activities, a required number of additional contractual teachers are recruited. Visiting Faculty: Eminent Professors from National Institutes, other Universities, local colleges / institutions are invited to enrich the academic and research perspectives of the students.

## Research Activities and Achievements:

- Well equipped computer labs with 190 computers and 3 IBM servers, Five high quality Scanners, .NET, SPSS, MINITAB, MATLAB and SYSTAT software.
- At present 19 Ph.D. students are engaged in research work.
- Total 14 students have been awarded Ph.D. degrees.
- Total 50 students qualified for the SET / NET examination.
- **Major Research Areas :**
  - Industrial Statistics, Statistical Inference, Soft Graph Theory, Fractional Calculus
  - Digital Image Processing, Content Based Image Retrieval, Pattern Recognition
- Published several papers in national and international journals.
- Presented research papers in national and international conferences.
- Organized National and International Conferences, Seminars, Webinars and Workshops.









## School of Social Sciences



The School of Social Sciences was part of the erstwhile PG Centre of Shivaji University having the Department of Ancient Indian History Culture and Archaeology from the year 1998. Three more departments like Mass Communication, Rural Development and Economics were added in the year 2009-10 to the school. Keeping in view of the reforms initiated at higher education in the country especially, in the context of globalization, the School of Social Sciences offers interdisciplinary learning. Unlike the conventional teaching, the School emphasizes transformation of personality of the students in addition to curricular teaching-learning. The School intends to engage faculty and students to understand and interpret social processes and suggest appropriate policy interventions. To meet these objectives, the School adopts innovative teaching methods, which involve strong theoretical orientation supported by skill development and practical application. Workshops, seminars, debates and group discussions are the regular features of students' learning. Fieldwork and Practical as integral parts of the curriculum.

● **Courses offered at the School:**

Sr. No.	Name of the Course	Intake
1	M. A. AIHC and Archaeology	40
2	M. A. Mass Communication	30
3	M. A. Rural Development	24
4	M. A. Economics	30
5	B. Voc Journalism and Mass Communication	50
6	Certificate Course in Agro Tourism	20
7	Certificate Course in Anchoring	20
8	Certificate Course in Documentary Film / Editing	20
9	Certificate Course in Share Market	20
10	P. G. Diploma in Museology	20

**Course Structure**

1. **M. A. (AIHC & Archaeology) :** [Click Here for Syllabus](#)
2. **M. A. Mass Communication :** [Click Here for Syllabus](#)
3. **B. Voc. Journalism and Mass Communication :** [Click Here for Syllabus](#)
4. **M. A. Rural Development :** [Click Here for Syllabus](#)
5. **M. A. Economics :** [Click Here for Syllabus](#)

**Teaching Staff**

Sr. No.	Name of the faculty	Designation	Specialization
1.	Prof.Dr. G. S. Kamble	Professor and Director	Rural Development
2.	Dr. (Mrs.) M. J. Patil	Assistant Professor	AIHC and Archaeology
3.	Dr. R. B. Chincholkar	Assistant Professor	Journalism & Mass Communication
4.	Dr. P. G. Vhankade	Assistant Professor	Economics
5.	Dr. P. N. Kolekar	Assistant Professor	AIHC and Archaeology



In order to support teaching – learning activities, a required number of additional contractual teachers are recruited. Visiting Faculty: Eminent Professors from National Institutes, ASI, other Universities, local colleges / institutions are invited to enrich the academic and research perspectives of the students.

#### ❖ **Department of AIHC and Archaeology**



The objective of this department is to educate and make the students familiar with Ancient Indian Heritage, Ancient, Culture, History and Archaeological sites and monuments. The Department has taken up Archaeological Excavations in Solapur district i.e. excavated sites of Wakav in Madha taluka (2012-13); Karkal, South Solapur. The students had taken part in Shirur (2012) and Ter (2015) excavation

programs. The department also conducts the training programs in excavation and the skills related to ‘Display and Conservation’ of museum antiquities. The successful students of the Department have ample career opportunities in teaching and research, tourism industry, government funded museums, Archaeological Survey of India and State Archaeology department, etc. The Department has the privilege of receiving the Rajiv Gandhi National Research fellowship, I C H R and other government Scholarships. Two students were also selected for a Diploma course in Archaeology, ASI, New Delhi. Four students qualified for the NET and SET examination. Four students have been awarded Ph. D degree from the Department in 2014-15. Two students are qualified as Assistant Archaeologists in Archaeological Survey of India & Maharashtra State Archeology. Three students are selected as Curators of various museums.

#### ❖ **Department of Mass Communication**

The expansion of mass media and communication in the country has created an unprecedented demand for media professionals. To meet the growing needs of the media industry and the demand for skilled manpower, the Department of Mass Communication has introduced a two- year M.A. course in Mass Communication from the academic year 2009-10. The main objective of this course is to enable students to acquire technical skills, writing and communication skills required for media professionals. The Department has a well equipped Media Lab to train students in News paper, Radio, T.V. and Social Media journalism. Over the past 10 years, this department is proactively engaged in various research and reporting activities. The successful students are well placed in media organizations in the state and outside. Organising National and State Level Seminars for students is a regular feature.

### ❖ Department of Rural Development

The School has introduced a two-year M. A. program in Rural Development since 2009-10. The Government of India has allocated a massive budget under various flagship programs to promote development in the rural areas. In the context of Millennium Development Goals initiated by the United Nations and the forces of globalization, rural society is set to undergo rapid transformation. There is a huge demand for trained personnel to plan and manage rural development activities in the country. The objectives of the course are to: (i) Train the students with deeper academic skills in understanding and analyzing problems of rural society; (ii) Orient them in the areas of policy research, advocacy and documentation skills; and (iii) Build their capacities as planners and managers of rural development programs. The successful students will have career prospects in Government and Non-Governmental Organizations, Research Institutions, Corporate Sectors and International Funding Agencies as planners, Administrators and Research and Documentation personnel. They can take up teaching as a career also.



### ❖ Department of Economics



The Department of Economics was started in 2009-10. The department offers two-year M. A. program in Economics with specializations in Environmental Economics, Agriculture Economics, International Economics, Banking, Mathematical Economics and Quantitative Techniques with Computer Applications. The department emphasizes applied research and the students are oriented in the application of concepts, tools and techniques in empirical research. The course curriculum is designed to facilitate the students to appear for NET and SET examinations and Public Service Commissions and other competitive examinations. The successful students have bright career prospects in teaching, research and planning and could find opportunities in Universities, Colleges, Research Institutions and Corporate Sectors.



## **Research Facilities**

Facilities available including sophisticated scientific instruments:

- Well-Equipped Computer lab with SPSS Software and broad-band Internet.
- Centralized and Departmental Library.
- Media Lab
- Archaeological Museum.
- Language Lab.
- Smart Classrooms

## **Major Research Areas:**

- Development Communication, Public Relations.
- Rural Studies, Social Sector, Agricultural Economics
- Archaeology, Philosophy and Religious Ideas in India. Ancient Art, Architecture & Iconography.
- Environmental Economics, Public Finance, Mathematical Economics etc.

## **Research Activities:**

- Number of sponsored research projects: 12 (07 complete and 05 ongoing)
- M. Phil: 01 student awarded and Ph. D.: 25 students awarded



# School of Commerce and Management



## Background

The School of Commerce and Management in the University campus was established in the year 2010 with a realization that all-round social transformation can be brought about through the spread of professional education. The School constantly endeavors to create propitious learning by providing updated courses aided with enriched infrastructure facilities such as well furnished classrooms, Computer lab, rich library and hostels. It is a gratifying experience to know that many students who have passed out from our school have established themselves very well in different walks of life. The MBA program is approved by DTE and AICTE.

### Courses Offered:

- **Master of Commerce (M.Com.)**

Sr. No.	Name of the Course	Specialization	Intake	Eligibility
1	M.Com.	Advanced Accountancy	60	B.Com.
2	M.Com.	Advanced Banking	30	B.Com.

### Eligibility Criteria:

- Candidates passed B.Com. from recognized Universities.
- Candidates have to qualify the Common Entrance Test (CET) conducted by Solapur University, Solapur.

- **Master of Business Administration (M.B.A.)**

Sr. No.	Name of the Course	Specialization	Intake	Eligibility
1	M.B.A.	1. Marketing Management 2. Financial Management 3. Human Resources Management 4. System Management 5. International Business Management 6. Tourism and Hospitality Management 7. Banking Management 8. Production and Materials Management 9. Agriculture & Co-operative Management	120	Any Graduate

**Eligibility Criteria:**

- Candidates passed any bachelor degree from recognized Universities.
- Candidates have to qualify the Common Entrance Test (MHCET) conducted by the State Government of Maharashtra or equivalent CET exam.

**Course Structure:**

**M. Com :** [Click Here for Syllabus](#)

**M. B. A. :** [Click Here for Syllabus](#)

**Teaching Staff:**

Sr. No	Name of the Faculty	Designation
1	Dr. Fadnavis M. M. Hon. Vice Chancellor	Director
2	Dr. Gadhave R. A. ( M.A., M.Phil, Ph.D, NET-JRF)	Assistant Professor
3	Dr. Gajdhane A. S. ( Ph. D., M.Com., M.B.A., SET, NET )	Assistant Professor
4	Dr. Datar R.S. ( Ph.D, M.B.A.)	Assistant Professor
5	Dr. Sawant V. J. ( Ph.D., M.Com., LL.M., M.A., SET)	Assistant Professor
6	Miss. Chippa P. A. (M.Com., SET)	Assistant Professor
7.	Dr. Kharade Mahadeo (C.A., Ph. D., M.Com., MBA)	Assistant Professor

In order to support teaching – learning activities, a required number of additional contractual teachers are recruited. Visiting Faculty: Eminent Professors from National Institutes, other Universities, local colleges / institutions are invited to enrich the academic and research perspectives of the students.



The School has been giving equal importance to community interaction activities, visit to manufacturing industrial, banks, and academic institutions.

The School has organized a Tally training program through which students get accounting software operating knowledge. This will be very beneficial for the future career point of view. Such drives are helpful for students to understand the latest trends and required skill for the profession.



- The School has organized campus interviews in association with reputed Industries. The School has been organizing campus interviews for ICICI Bank and Kotak Mahindra Bank every year. For the year 2016-17, 32 students were selected under this placement campaign.
- Apart from the academic teaching, the School conducted various cultural activities viz. Welcome function, Traditional day, Teacher's day, Farewell Program.



### Facilities:

- Classrooms with LCD Projector and Departmental Library
- Computer Lab with Internet and Career Development Program
- NET/ SET Exam Preparation, Placement Cell and Banking Exam Preparation
- Industrial Visit and Special Guest Lectures, E-Learning, Learn and Earn Scheme

## School of Technology



The School of Technology with a five year integrated M.Tech. Program in Cosmetic Technology was introduced in the University campus from 2018-19. The course gives extensive knowledge of Cosmetic Formulation, Manufacturing, Analysis and Marketing of beauty and healthcare products. It also covers the fundamental aspects of cosmetic science that is necessary to understand material development, formulation, and dermatological effects resulting from the use of tissue products. The chemical compounds used in cosmetics, the preparation /synthesis, testing and development of such compounds from natural and synthetic sources is a rapidly developing field. The research of different products gives very high value addition and has very high economic importance in the commercial world. Cosmetic Technologies have been at the forefront of innovative personal care manufacturings for over twenty years.







- **Five Years Integrated M.Tech Course in Cosmetic Technology:**

Every human being wants to be attractive and fresh, which will improve his or her personality. Cosmetic Technology is a science which enhances the appearance or odour of the human body. The chemical compounds used in cosmetics, their preparation, testing and its developments from natural and synthetic sources is a rapidly developing field. The research of different products gives very high value addition and has very high economic importance in the commercial world. Cosmetic Technologies have been at the forefront of innovative personal care manufacturing for over twenty years. The course gives extensive knowledge of Cosmetic Formulation, Manufacturing, Analysis and Marketing. It also covers the fundamental aspects of cosmetic science that are necessary to understand material development, formulation, and the dermatological effect that result from the use of tissue products.



### **Highlights of Some Career Options after M.Tech Course in Cosmetic Technology:**

- Areas of employment:
  - Beauty Product Companies
  - Colleges & Universities



- Fashion Content Writing
- Luxurious Hotel & Resorts (Parlours)
- Spa Centers
- Television and Film Industries

### Types of Job

- Beauty Advisor, Brand Executive and Brand Manager
- Business Development Manager
- Lecturer and Quality Control Analyst, Research & Development Executive

### Eligibility:

- Students with H.S.C. with Science Stream.
- Students with B.Sc. (B group) are eligible for direct admission to Third year after successful completion of Bridge course.
- Students with D.Pharm are eligible for direct admission to Second year.
- Students with B.Pharm are eligible for direct admission to Fourth year.
- Course Duration: Integrated Five year (4+1), Intake Capacity: 30
- General Document Required:
  - S.S.C(10th) and H.S.C(12th) Mark sheet and Certificate
  - Leaving Certificate after passing H.S.C(12th)

### Document Required By Reserved Category Candidates:

- Caste Certificate, Caste Validity Certificate
- Non Creamy Layer Certificate.
- **Course Structure:**  
**Five Years Integrated M.Tech Course in Cosmetic Technology**  
[Click Here for the Syllabus](#)



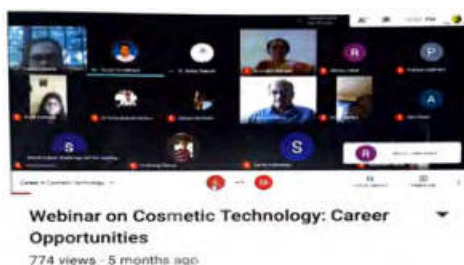
### Teaching Staff:

Sr. No.	Name of Faculty	Designation	Qualification
1.	Dr. Mrs. A. S. Lawand	I/C Director	Ph. D.
2	Dr.L.S.Walekar	Assistant Professor	Ph.D, Postdoc.
3	G.B.Jagtap	Assistant Professor	M.Pharm.
4	S.S.Kawathekar	Assistant Professor	M.Pharm.
5	S.G.Pore	Assistant Professor	M.Pharm.
6	S.A.Ghorpade	Assistant Professor	M.sc.Chemistry

In order to support teaching – learning activities, a required number of additional contractual teachers are recruited. Visiting Faculty: Eminent Professors from National Institutes, other Universities, local colleges / institutions are invited to enrich the academic and research perspectives of the students.

### ● Various Activities

- ☐ School arranged a Webinar on Career and Opportunities in Cosmetic Technology.



- ☐ Students participated in the E-Poster Competition held on the occasion of Voters day and won the prize also.



## School of Languages and Literature



### Inaugural Ceremony School of Languages and Literatures



By keeping in mind the importance of language and vision of increasing employability of the students, the PAHS University has established a School of Languages and Literature in the academic year 2018-2019. Eight departments are working under the School of Languages and Literature viz. Marāthi, Sānskrit, Hindi, Urdu, English, Kannada, Pāli and Prākrut. The major aim of the school is to develop communication skills which are important for the personality development and employability of students after a Master's degree. It also aims at enhancing the knowledge of literature of that core subject along with allied branches. Moreover, the syllabus of each program emphasizes on other soft skills too. In order to meet these aims effectively, the School adopts innovative teaching methods. Workshops, seminars, debates and group discussions are the regular features of students teaching-learning. The School envisages to participate in the process of making languages as a language of new technologies, and to optimize the use of languages in computer-based instruction systems. The vision of the School is to preserve and promote the human values and aesthetic values amidst consumerism through teaching of culture, language and literature.

- **Courses offered**

Sr.No.	Name of the Courses	Duration
1	M.A. Marāthi	02 Years
2	M.A. Sānskrit	02 Years
3	M.A. Hindi	02 Years
4	M.A. English	02 Years
5	M.A. Urdu	02 Years
6	M.A. Kannada	02 Years
7	M.A. Pāli	02 Years
8	M.A. Prākrit	02 Years

### Course Structure

1. M.A. Marāthi - [Click Here for the Syllabus](#)
2. M.A. Sānskrit - [Click Here for the Syllabus](#)
3. M.A. Hindi - [Click Here for the Syllabus](#)
4. M.A. English - [Click Here for the Syllabus](#)
5. M.A. Urdu - [Click Here for the Syllabus](#)
6. M.A. Kannada - [Click Here for the Syllabus](#)
7. M.A. Pāli - [Click Here for the Syllabus](#)
8. M.A. Prākrit - [Click Here for the Syllabus](#)

### Teaching Staff

- **Dr. P. N. Kolekar, (I/c) School Director**
- **For More details:** [http://www.sus.ac.in/school\\_languages/Faculty-Profile](http://www.sus.ac.in/school_languages/Faculty-Profile)

## Department of Marāthi

The department offers M.A. Marathi course and it is a research center for Ph.D. programme. It organizes seminars, workshops and conferences to introduce students with new emerging areas of research and writing in Marathi language and literature. Every year, the Department celebrates Marathi Bhasha Pandhrawada and Marathi Bhasha Gaurav Din in order to contribute to the national objective of preservation and development of indigenous languages. A 'Memorandum of Understanding' between Department of Marathi, School of Languages and Literatures, Punyashlok Ahilyadevi Holkar Solapur University, Solpaur and Dakshin Maharashtra Sahitya Sabha, Solapur was signed on the 1 st April, 2021. The MOU outlined the initiative for mutual cooperation between the two parties to inculcate the research activities among the students. There are appointed teachers to run the course.



Celebration of Marathi Bhasha Gaurav Din on 20 th January 2021

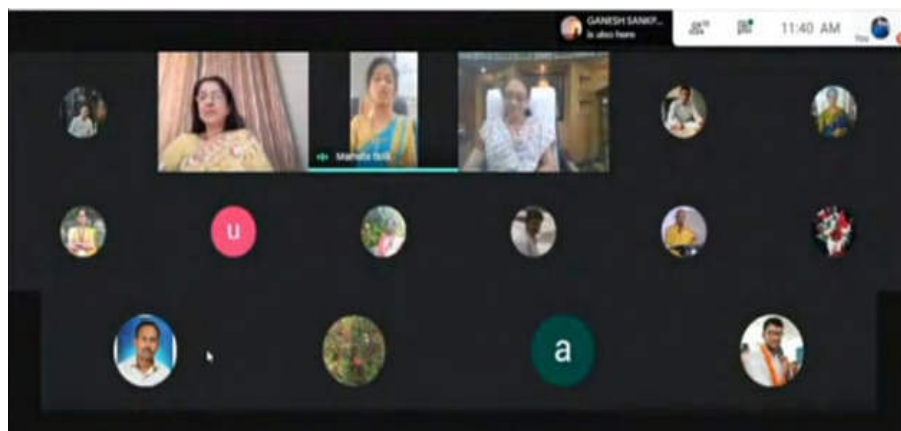


MOU Signing Event



## Department of Hindi

The department offers a two-year PG course, M.A.in Hindi Language and Literature and research degree leading to Ph.D. Besides effective and resourceful curriculum, the department provides training in translation and script writing for electronic media. It also conducts workshop, seminar and discourse programmes to make the students updated with recent trends in contemporary academics. It provides NET and SET guidance to the aspirants by guest lecturers. There are appointed teachers to run the course. Every year, the department celebrates ‘Vishva Hindi Divas’ by organising essay and elocution competitions and workshops to commemorate our national language.



Sahitya Sanvad organized on 12 th December 2020



‘Vishva Hindi Divas’ celebration on 21 st January, 2020 in collaboration with Bank of India.

## Department of Sānskṛit



The Department of Sanskrit was established in the university campus in the academic year 2018-2019. It offers two-year P. G. course, M.A. Sanskrit. It attempts to use modern pedagogy in teaching of Sanskrit and make it relevant to contemporary age by adding the subjects like ‘Sanskrit for understanding of Ayurveda’. These activities not only sustain the ancient knowledge of India but also increase

the employability of students. The syllabus of the department is designed in accordance with the syllabuses of MPSC, UPSC, NET and SET examinations. Linguistics, ‘Translation Studies’ and Sanskrit syntactic studies are the main areas of the course. Along with it, the department started a Skill based course ‘Certificate Course in Communication Skills in Sanskrit’ to train students to use Sanskrit effectively . The library of the university is well equipped with reference books and classics. Moreover, the university provides digital classrooms and well-qualified teachers for the students. It contributes to preservation of Sanskrit language by making the students effective in Sanskrit communication. Every year, the Department celebrates ‘Sanskrit Day’ by organising essay competitions and webinars.



National Webinar on Sanskrit: Origin of all languages Its Past and Present Relevance on 4 th August, 2020

## Department of English

The Department of English was established in 2018-19 in the School of Languages and Literatures. It runs regular and skill-based courses. It runs two-year P. G. course M.A. in English. It also serves as an advanced research center that offers the research degrees of Ph.D. The syllabus is designed in such a way that opens new opportunities for the students. Besides the regular classes and practice sessions, the department also organizes workshops, seminars, conferences, symposia to make the students acquainted with the recent trends in contemporary research. It has also emerged as a significant resource center that facilitates the students and researchers with the primary, secondary reference books along with e-content in the central library of the University. In addition to the course work, the department has started 'Certificate Course in Communication Skills in English' to develop communication and related soft skills, which are the essential parts of the personality development and employability of the students.

The PG syllabus encompasses the following broad specializations:

- Literature in English
- Linguistics and English Language and Literature Teaching (ELLT)
- Comparative Literatures in English
- Translation Studies
- Cultural Studies



A Three-Day Online Workshop on English Communication and Presentation Skills organized on 12,13 &14 October 2020



NET/SET Guidance Workshop on 26 th March 2019

## Department of Urdu

The Department of Urdu was established in the university campus in the academic year 2018-2019. The department offers a Two Years PG course (M.A.) in Urdu Language and Literature. It is also a research centre. Besides the enriched and resourceful syllabus, the department organizes the different programs and events that introduce the student with the Urdu Language and Literature.



One Day Workshop



M.A. II One week Lecture series

These specializations increase the possibility of sustaining the endangered language and also provide the opportunity of enhancing the employability of the students. Along with it, Urdu Department has started 'Certificate Course in Communication Skills in Urdu' to acquaint students with different aspects of Urdu language and develop an interest in Urdu language. A 'Memorandum of Understanding' between the Department of Urdu, School of Languages and Literatures, Punyashlok Ahilyadevi Holkar Solapur University, Solapur and Khadimane Urdu Forum, Solapur was signed on the 7<sup>th</sup> July, 2021. The MOU outlined the initiative for mutual cooperation between the two parties to inculcate the research activities among the students and for the enhancement of the translation activities. The teaching - learning and other activities are sincerely carried out by the appointed teachers in the department.



MOU Signing Event



## Department of Pāli

The Department of Pali has a two Years PG course (M.A.) in Pali Language and Literature. There are research students pursuing their Ph.D. program too in the department. The department attempts to use modern pedagogy in teaching of Pali and make it contemporary by adding the subjects like “Pali for understanding of ancient Indian Culture” and “Ancient Script Knowledge”. These activities not only sustain the ancient knowledge of India but also it increases the employability. The syllabus is designed in accordance with the requirements of MPSC, UPSC, NET and SET examinations. Language has the Function of Cultural accumulation and Historical transmission. Pali language is the main content of such studies. Along with it, the department offers a skill-based course ‘Certificate Course in Pali Spoken’ to make students aware of the great heritage of the Pali language and its literature. The library of the university is well equipped with reference books and classics. Moreover, the university provides digital classrooms and well-qualified teaching faculty for the students.

The areas of specializations are:

- Ancient and Modern Literary Tradition
- Translation Studies
- Pali Literature
- Pali (Buddhist) Cultural Studies
- Historical excavation and caves studies
- Ancient literary tradition and script



Inaugural Function of Pali, Prakrit & Kannada Departments



Celebration of Pali Divas



## Department of Prākrit

In the academic year 2019-2020, Prakrit department was established in the University campus. It offers M.A. course as well as Ph.D. program for students. Besides effective and resourceful curriculum, the department also provides training and translation for ancient Prakrit literature. It organizes seminars, workshops and conferences to introduce students to new areas of research in Prakrit language and literature. The library of the university is equipped with reference books and classics. There are digital classrooms and well-qualified faculty to run the courses. The focus at present is on cultural studies, translation studies, ancient literary tradition and script, medieval Indian languages and literature and pre-modern languages and literature. A 'Memorandum of Understanding' between Department of Prakrit, School of Languages and Literatures, Punyashlok Ahilyadevi Holkar Solapur University, Solapur and Acharya Jambusagar Granthamala, Solapur was signed on the 7 th July, 2021. The MOU outlined the initiative for mutual cooperation between the two parties to inculcate the research activities among the students and for the enhancement of the translation activities.



MOU Signing Event

## Department of Kannada

In the academic year 2019-2020, the Department of Kannada was established in Punyashlok Ahilyadevi Holkar, Solapur University campus. Solapur is a multi-lingual city. There are more than five languages spoken by the people, Kannada is one of them. The origin of the language has a history of eight hundred years. Shivayogi Sri Siddheshwar has created a great history by his social-spiritual-literary work. It goes to his credit that he is the first Kannada writer of this region. This border area of the district is rich in Folk-Literature and Folk-art. The department offers M.A. course in Kannada and it is a research center for Ph.D. also. The course contains almost all the forms of literature from ancient to modern period. The Department also organizes seminars, workshops and conferences to introduce students to new areas of research in Kannada language and literature. The specializations in M.A. programmes are: Kannada Literature, Cultural Studies, Kannada Linguistics, Translation Studies.



Inauguration of the Department



Scholarship to Students by KDA



Educational Tour



Kannada University had given 499 free books to the Department

## **School of Performing Arts and Fine Arts**



### **Background**

The School of Performing Arts and Fine arts is established in 2019 in the Punyashlok Ahilyadevi Holkar, Solapur University, Solapur. Solapur is one of the important cosmopolitan cities on the borders of Maharashtra state. It has a substantial population of Kannada and Telugu speaking people in addition to its state language Marathi. Even within Maharashtra also it is known as the gateway of Marathwada. The traditional Weavers community is mostly Telugu origin whereas the Kannadigas are traders. In addition, there are many other communities migrated from other parts of the country and it makes altogether a different mix of cultures. The district is known as the land of saints. Millions of Warkaris visit Pandharpur in a year. The Mridanga and Taal are important musical instruments they use to recite devotional songs/Abhang. People here love music and other performing and fine arts. Many artists from Solapur in the field of Dramatics, Classical Vocal/Instrumental Music have achieved commanding heights and many more are eager to make their career in these fields. It was the need of the hour which was realized by our Hon. Vice - Chancellor Dr. Mrinalini Fadanavis and she decided to open these avenues of career for the students.

The school of performing arts offers 2 years full time comprehensive masters degree courses in classical vocal music, percussion instruments like Tabla / Pakhawaj and Dramatics. The goal is to train students to develop their creative talent and abilities thereby attaining a systemic understanding of the art and science of performing arts and its aesthetic applications. To prepare students to explore opportunities in the field of performing arts and fine arts. Teachers are also encouraged continuously to participate in seminars, workshops, competitions and cultural programs and such interactive programs. The objective of the music training and education imparted in the faculty of performing arts is to make the students all-round musician and performer, aware of the various concepts and issues involved. The faculties and students are striving hard to make it a center of excellence.

## Courses Offered

Sr. No.	Name of the Course	Intake
1.	M.A. Music - Vocal/Instrumental	20
2.	M.A. Music - (Tabla/Pakhawaj)	20
3.	M.A.- Dramatics	20

### Course Structure:

**M.A. Music - Vocal/Instrumental** - [Click Here for the Syllabus](#)

**M.A. Music - (Tabla/Pakhawaj)** - [Click Here for the Syllabus](#)

**M.A.- Dramatics** - [Click Here for the Syllabus](#)

## Teaching Staff

Sr. No.	Name of the faculty	Designation	Specialization
1.	Dr. M. J. Patil	Director	A.I.H.C. & Archaeology
2.	Dr. A.M. Dharmadhikari	Assistant Professor	Music - (Vocal / Instrumental)
3.	Dr. K.J. Nerkar	Assistant Professor	Music - (Vocal / Instrumental)
4.	Mr. D.P. Dabhade	Assistant Professor	Music - (Tabla / Pakhawaj)
5.	Mr. V.S. Somvanshi	Assistant Professor	Music - (Tabla / Pakhawaj)
6.	Mr. A. A. Deshmukh	Assistant Professor	Dramatics

## School of Allied Health Sciences



Solapur City has been included in the Smart City project launched by the central government and is fast becoming a popular destination for medical tourism. As per National Skill Development Council (NSDC) report there is vast need of allied health workforce in Solapur city and District. With a view to cater this need, a separate School of Allied Health Sciences has been established by Punyashlok Ahilyadevi Holkar Solapur University, Solapur. Currently the School runs one postgraduate diploma course in the area of dietetics and nutrition and two certificate courses in yoga teaching and acupressure respectively. From this academic year the school has started a MA in Yoga course.

- Established : Jan 2019
- Director in Charge: Prof. Dr. V. B. Ghute
- Coordinator : Dr. Abhijeet Jagtap

To support regular teaching-learning, additional contractual teachers are appointed in addition to contributory expert lectures from eminent scholars.



## ● Courses Information

Sr.No	Name of the Course	Nature	Duration	Intake	Eligibility
PG Degree Course					
1	M.A. Yoga	Full Time	2 year	30	Any graduate from UGC recognized university
PG Diploma Courses					
2	Post Graduate Diploma in Dietetics and Nutrition (PGDDN)	Full time with Flexible Learning Approach	1 Year	30	Any Medical, AYUSH, Nursing, Science, Life Science Graduate, B. P. Ed, BA Physical Education
3	Diploma in Yoga Teacher (Under Skill Development Centre)	Weekend Based Certificate Course	1 Year	60	12 <sup>th</sup> Pass
4	Certificate Course in Acupressure (Under Skill Development Centre)	Weekend Based Certificate Course	6 Months	90	12 <sup>th</sup> Pass

### Facilities:

- Well Equipped Nutrition Lab
- Internship in reputed hospitals for practical onsite training
- Acupressure and Nutrition Consultancy to provide exposure to the students.
- Flexible Learning Approach
- Dedicated Hall for Yoga and Acupressure at the centre of Solapur city
- Various workshops and training programs for the students

### Contact:

**Dr. Abhijeet Jagtap –Coordinator, School of Allied Health Sciences**

**Mobile 9730105961 Email: [ahjagtap@sus.ac.in](mailto:ahjagtap@sus.ac.in) , [sahs@sus.ac.in](mailto:sahs@sus.ac.in)**



Yoga Hall



Workshops- Therapeutic Nutrition & Acupressure Training



Acupressure Training & Consultancy



Nutrition Lab & Workshop Activities

## दिव्य मराठी विशेष • व्हॉट्सअॅपच्या समूहातून आज्ञी-माजी विद्यार्थ्यांनी घेतला रुग्णसेवेसाठी पुढाकार विद्यापीठाचा कोविड वॉरियर्सचा समूह मदतीस

प्रतिनिधी । सोलापूर

कोविड १९ मुळे उदभवलेल्या आपत्कालीन प्रसंगी पुण्यश्लोक अहिल्येदेवी होळकर विद्यापीठाचे कोविड वॉरियर्स जिल्हा रुग्णालयाच्या मदतीसाठी पुढे सरसावले आहेत. विद्यापीठातील आरोग्य विज्ञान संकुलातील आज्ञी माजी विद्यार्थ्यांच्या कोविड वॉरियर्स नव्याने एक व्हॉट्सअॅपचा समूह संकुलाचे सनमान्य डॉ. अर्जुनराव जगताप यांनी तयार केला. या सर्व मुलांना प्रशिक्षित करून त्यांना सनमान्य जनता अर्जुन प्रशासनच्या मदतीला पाठले आहे.

ही युवा मंडळी कोविड आजारावरून जनजागृती करणे, समुपदेशन करणे, वेळप्रसंगी जिल्हा प्रशासन जी काही जबाबदारी देईल ती पार पाडणे यासाठी गेल्या



विद्यापीठाच्या आरोग्य विभागात कोविड वॉरियर्स समूहातून काम करताना स्वयंसेवक.

महिन्यापासून कार्यरत आहेत. नुकतेच या स्वयंसेवकांची एक टीम सोलापूर येथील एसआरपी कॉम्प्लेक्स येथे सशिक्षित नमुने घेणे, त्या संदर्भातील आवश्यक ते फॉर्म भरणे या कामासाठी जिल्हा शास्य चिकित्सक यांच्या

मार्गदर्शनाखाली काम करत आहे. यावेळेस या स्वयंसेवकांच्या माध्यमातून आरोग्य सेतु अॅपचा प्रसार करणे, रोगप्रतिकारक शक्ती वाढण्यासाठी आहार व व्यायाम यांची माहिती देण्यासाठी मूलभूत माध्यमातून विविध प्रसार करणे इत्यादी कामे चालू आहेत. या समूहात वय वर्ष १८ ते ४५ पर्यंतच्या वयोगटातील व्यक्तींचा समावेश असून त्यात डॉक्टर, अहारतज्ञ, योग प्रशिक्षक, अॅम्बुलेंस तज्ञ, मायक्रोचॅरिटेबलजीव आदींचा समावेश आहे. सनमान्य डॉ. अर्जुनराव जगताप यांनी या स्वयंसेवक विनामुल्य सेवा देत आहेत. ३५ विद्यार्थी सध्या सोलापूरत विविध स्तरावर काम करत आहेत. काहीनी सोलापूर येथे तर काहीनी जिल्हा रुग्णालयात, काहीनी सिंगरड कॉलेजमध्ये असलेल्या केंद्रात कार्यरत पार पाडले आहे.

जनतेची सेवा करण्यासाठी सज्ज

अॅम्बुलेंस या इन्स्युइड शिक्षणाच्या प्रशिक्षणातून गेली अनेक दिवस व्हॉट्सअॅप समूह कार्यरत होता. या समूहात मी कोविड वॉरियर म्हणून या संदर्भात सेवा करण्याकरिता कोणी डासूक असले तर नक्की सांगा, असा संदेश दिला होता. पाहता पाहता शंभर-सव्वारो लोकांनी स्वयंसेवक उतर दिले. त्यातील २० लोक हे जिल्हा रुग्णालय व प्रशासन यांचा मदत करत आहे. काही लोक तांत्रिक बाजू सोपाळात आहेत. सगळ्यांनी एक रुपयाची व पैत काम घेऊन देवले आहे. केवळ सामान्य जनतेला व प्रशासनाला मदत मिळावी हा प्रामाणिक हेतु आहे.

डॉ. अभिजित जगताप, आरोग्य विज्ञान संकुल, कोविड वॉरियर्स समूहमुख

Social Activities by Students

## School of Life Sciences



The School of Life Sciences with the Department of Microbiology was established in 2020 at Punyashlok Ahilyadevi Holkar Solapur University campus. The department runs M.Sc. Microbiology two years Full time program divided into four semesters. The courses of the program are designed to include classroom teaching-learning, laboratory work, project work, seminars, assignments and field visits, etc. The prime objective of the Master's Program in Microbiology is to acquaint the students with knowledge and analytical skills in microbiological fields including medical, clinical and diagnostic microbiology, environmental biotechnology, food, dairy, agriculture microbiology, molecular biology, r-DNA technology and bioprocess or fermentation technology, etc. at an advanced level. The program emphasizes understanding and apply the acquired knowledge on microbial processes, interaction of microorganisms with each other, interaction with physical and chemical environments and biological systems around. The laboratory training and project work will enable the students to a broad range of positions in research, industry, consultancy, education, public administration and diagnostics, etc.



Inauguration of the School of Life Sciences and Laboratory of Microbiology at the hands of Hon'ble Vice-Chancellor Dr. Mrunalini Fadnavis



Address by the Pro-VC and Director School Dr. D.N. Mishra



First batch in 2020-2021 with Director and teachers

## Department Infrastructure and Facilities

The department is well-equipped with technologically updated laboratories and classrooms to provide quality teaching and research opportunities to students. The Laboratories have the equipment like Microscopes, Bacteriological Incubator, Autoclave, UV-Visible Spectrophotometer, Centrifuge, Hot Air Oven, Weighing balance, Gel electrophoresis unit, Refrigerator, etc. The department also has necessary laboratory chemicals and glassware to support practical work as well as research projects. This excellent infrastructure aided with a beautiful large university campus, good Library and Hostel facilities make a student feel homely.

## Course Structure : M.Sc. I MICROBIOLOGY - [Click Here for the Syllabus](#)

- **Activities conducted**

There are many lectures and practicals by expert guest faculty (like senior teachers from other universities, medical doctors of the university and biotechnologists) organized for the dissipation of experience and knowledge of them in the microbial fields. This co-curricular activity has given good practice of handling instruments, preparing various forms of culture media and easy identification of cultured microorganisms or fungal species.

Regular monitoring of students' attendance and performance in the departmental level internal evaluations has been making the students confident in the subjects. Each topic of the syllabus is presented to the students in ppts, videos and write-ups for better understanding and remembrance.

- **Program Eligibility:**

Bachelor's degree with Microbiology as principal subject or Bachelor's degree in any of the Life sciences subjects provided that the candidate had Microbiology as one of the subsidiary/optional subjects for two semesters at B.Sc. II and qualified M.Sc. entrance test conducted by PAH Solapur University (as per university notification). Students from other Universities with B.Sc. General Degree in life sciences (with one optional subject as Microbiology) and who have passed the entrance examination conducted by the University are also eligible.

- **Future prospective:**

Considering the effects of increasingly different pandemic scenarios in the world, society needs skilled manpower for the collection of samples and diagnosis of causal organisms for rapid protection measures and treatments. The M.Sc. in Microbiology Program will cater to this increasing demand of providing skilled young manpower, especially for such diagnosis of infectious diseases. Along with the diagnostic field, this manpower can fulfill the demands of pharmaceutical industries to develop and manufacture drugs for the treatments. The microbiology postgraduates could be employed at vaccine research and manufacturing industries to ensure quality in the activities



and products. The Microbiology and clinical laboratory hands-on training will empower the students to prepare for careers in broad range fields too.



**Students Performing Practical**



## Knowledge Resource Centre (University Library)

Knowledge Resource Centre is a consistent source of wealth of information and is a prime requisite for any institute of learning and research. The University Library has a collection of over 30,000 volumes that include resources in different forms like books, theses, dissertations, journals, periodicals and special publications, etc. The University Library subscribes 78 national and 27 international journals and 105 periodicals in addition to the e-sources like J-Gate, Sodhganga and Delnet which provide access to over 28,404+ e-journals. There is a spacious reading room with a capacity of 100 students. The reading room is open from 8.00 am to 6.00 pm (8.00 pm during examination period). There is total computerization of the Library functioning. Library organizes Librarian's Day, Book exhibition, several educational and training programs throughout the year for the benefit of the users. The library also implements the Earn and Learn Scheme under which poor and needy students work in the library on hourly basis remuneration.



Dr. S. R. Ranganathan Jayanti  
**KRC literacy program for newcomers**



**Book Exhibition and Grant Dindi**



**Library Services:**

- Open Access Facility
- Study Centre (Located at City) Providing Competitive exam preparation facility.
- Reprographic Service : for students and staff
- Internet Facility: Internet facility for Teachers and student
- Display of New Arrivals: newly arrived books are kept in display rack
- Periodical Display: separate periodical section is available for students & researchers
- Newspaper Clipping Service

### **KRC Collection**

Sr. No.	Name of Collection	Number
1	Total No. of Books (as on 31.05.2021)	41,000
	Total No of Titles	17,000
2	National Journals Annually	54
	International Journals Annually	20
3	Donated Books	4,000
4	Theses and Dissertations	1,404
5	e-Journals (J-gate)	50,000
6	e-Books (Pub: Cambridge, McGraw hill, sciencedirect, videeya.)	494
7	Braille Books (National Braille Press)	415
8	A/V CD's(National Braille Press)	142

#### **Special Features:**

- Smart Card Facility is available for Students and Staff
- KOHA Software for in house operation:
- Web-OPAC Facility: Students can search books.
- Working RFID system used for Books Issue and return and books security.
- Earn and Learn facility: Under this scheme students work in the Library departments, office section earn hourly basis.
- Separate Redding Hall for ladies and gents
- Know my KRC (Library): Students at the beginning of joining any course in the campus are made aware of library facilities, Operations, searching and referencing etc.
- Research students: Guiding team to search Shodhganga, Plagiarism, Checking of thesis for Plagiarism by software even in language
- Book exhibition conducted periodically

## **Facilities in the University Campus**

- **Instrumentation Centre**

The University has developed a central instrumentation centre to facilitate scientific observations and analysis of different samples by sophisticated instruments of the research students, industries and other interested entities at nominal fees. This centre has been adding value to the research and utility prospects of materials.

- **Skill Development Centre**

There are many skill development courses conducted by the University's Skill Development Centre to enhance the skill, technical ability and potential employability of the campus students. Students can take admissions in these courses as per their choice and future plans. These courses are purely autonomous and not included in the core course curriculum. Separate certificates are issued after successful completion and passing of the respective examinations.

- **NSS Unit**

The University has a strong NSS unit and has won the Best University for NSS, Best NSS Programme Co-ordinator and Best Student Volunteer of the State Awards From Government of Maharashtra in Year 2008 – 2009. Students can join the NSS unit during their post graduate studies.

- **Health Centre**

The University has established a Health Centre with the main objective to provide basic primary healthcare to students and staff of the university. Besides providing health services, various health awareness camps and programmes such as anemia and blood checkup, diabetes and hypertension check-up and bone density check-up, etc. are frequently organized by the Health Centre.

- **University Hostels**

Inside the Campus, University has Boys' and Girls' Hostels. The Girls' Hostel has an accommodation facility for 200 girls and the Boys' Hostel has a capacity of 100 boys. The admission to the Hostel is strictly on merit basis and as per reservation rules. The Hostel mess is compulsory. On cancellation of hostel admission, the hostel deposit is refunded.



- **Sports and Physical Education**

There is a strong sports unit working in the campus that nurtures and monitors the sports spirit and potentials of the interested students and staff. Several in-house games and competitions are organized on various occasions. Sixteen Sports grounds are developed in the campus to enable students to practice and conduct competitions. The University hosted the Inter-University Krida Mahotsav 2019 of the state of Maharashtra at the behest of Hon'ble Governor's office at different fields/ courts specially developed to conduct such games/ sports. Students are coached and guided to participate at different state and national sports/ games events.



- **Post Office Services:**

There is a Sub-post office functioning in the campus to support the students, staff and administration in sending their documents/ letters/ parcels and also deposit their money in a post bank account for transactions.

- **Student Development Unit:**

As per the Maharashtra Public University Act 2016, PAH Solapur University has an organized Student Development Unit to facilitate all round quality improvement of talents of students admitted in the University campus and affiliated colleges through various student centric programs. University teams are specially coached to participate and win laurels during youth festivals and other competitions held at different state and national levels. The record of such achievements are noteworthy for a young University.

- **Competitive Exam Coaching Centre:**

In order to assist the students belonging to weaker sections, especially of SC and ST categories, the University has become a sub-Centre of **BARTI and TRTI** to guide and coach them for the UPSC, MPSC, Banking and other competitive exams. The students are provided with stipend and lodging facilities.

In addition to these (as above), there are many other Campus facilities are available and students' supporting Daycare Centre, Earn and Learn scheme, Girl students' adoption scheme, International Students' Cell, Lab on wheels, Cafeteria, Student Facilitation Centre, Students' insurance, Mobile ATM, Community Radio Centre.



## ● Admission Rules

### ● Eligibility for Admission:

1. Admission to post graduate courses in the affiliated Colleges / Institutions and University Departments shall be strictly based on a) Eligibility criteria as prescribed by the University from time to time; b) Reservation rules as prescribed by the State Government from time to time and adopted by the University and c) While preparing the merit list for admission the aggregate marks of the final year degree course should be considered.
  1. A student satisfying the eligibility criteria of the course and has passed the entrance examination conducted by the University shall be eligible to take the admission.
  2. Other University students satisfying the eligibility criteria of the course and have passed the entrance examination conducted by the University shall be eligible to take the admission.
  3. Merit list will be prepared by considering marks obtained by the candidate in the entrance exam only.
  4. In case of other university students, the merit list will be prepared on the basis of entrance examination marks only.
  5. At the time of preparing the merit list of the students to be admitted, the Admission Committee shall consider the marks obtained in the principal subject at the third year examination. In case there are two or more students with the same marks, the total marks obtained by these students at UG part-I, II and III Examinations shall be considered. Even after this, if the student continues to obtain equal marks, the marks secured by the students in the second year examination in the same subject shall be considered.
  6. In case of students from other Universities applying for admission to postgraduate courses of this university, it shall be necessary to ensure equivalence of the degree course offered by the said students. The quota for the students from other Universities in the State of Maharashtra will be 10 percent of the intake capacity, and in the case of the students from other Universities the reservation rules shall apply in toto.

In case any seats from this quota remain vacant, students in order of merit shall be admitted from the waiting list.

2. In view of the problem of dropouts, additional 10 percent of the sanctioned intake capacity may be admitted in the post graduate courses in the Affiliated Colleges/ recognized Institutes/University Departments/Autonomous Institutions, subject to the general rules of the admission framed by the university from time to time and with prior permission of competent authority of the University.
3. In case of admission to second and/or third year of the post-graduate courses, preference shall be given to the students of the same department. However, if vacancies remain, other things being equal, students from other post-graduate departments may be admitted.
4. a) For the admissions to University Departments/ Colleges which runs the program, there shall be an Admission Committee to monitor the admissions. The Admission Committee shall be constituted as under:
  - A. Director of the School (Chairperson)
  - B. Head of each Department
  - C. Principal or his nominee of the concerned college
  - D. One Associate Professor/ Assistant Professor from reserved category
  - E. One Associate Professor/ Assistant Professor (Secretary)

b) For the admissions to PG courses offered at Affiliated Colleges / Recognized Institutions /Autonomous Institutions (which courses are exclusive in the Colleges) the Admission Committee be constituted as under:

- a. Chairman (nominated by University)
  - b. Principal / HOD / Nominee of Concerned College
  - c. One Professor/Associate Professor/ Assistant Professor (from reserved category)
  - d. Assistant Registrar/ PG section senior person (Secretary)
5. The foreign students shall be admitted to any Post-Graduate Course in a Recognized Institution /Affiliated Colleges /Autonomous Institution or in the University Department in addition to sanctioned seats as per the directives of the UGC / State Government on producing provisional eligibility certificate from the University. For obtaining provisional eligibility certificate, the foreign student shall apply along with necessary certificates to the University in the form prescribed by the University and pay fees as prescribed by the University from time to time.
  6. Students participating in sports / cultural / other competitions securing at least fifth rank in the National, Inter-University sports/ cultural events (individual or Team) may be considered for admission as a special case, subject to the approval of the Hon'ble Vice- Chancellor.
  7. One additional seat is to be reserved for each course on the campus to the kin or ward of PAH Solapur University employee (Regular on roll) subject to the approval of the Hon'ble Vice-Chancellor.

#### **Important Instructions about Admission:**

1. General merit list will be displayed on University web site <http://su.digitaluniversity.ac> or <http://sus.ac.in>
2. The university will not make any individual correspondence.
3. List of students called for First and Second Round of counseling will be displayed on the University web-site as per the schedule and it is the responsibility of the students to check the list and attend the counseling rounds.
4. Students should attend the round in person along with original documents and prescribed amount of fees.
5. Students who remain absent on specified date and time of the counseling, will be considered only for spot admission as per merit and reservation against vacant seats, if any.
6. It is compulsory for the student to take admission for the course in university department/college after being allotted by the admission committee. If a student fails to take the admission in specified time given by the admission committee, he/she will not be considered for admission in any subsequent round except spot round.
7. Decision of the admission committee shall remain final.

#### **Cancellation Rules:**

Cancellation of admission and refund of money shall be as under:

1. Cancellation of admission and refund of money shall be made as per the Public Notice (F.No.1-3/2007 (CPP-II) date 23rd April, 2007 & F. No. 6-1(7)/2006(CPP-1) date 22 June, 2011) by University Grants Commission, New Delhi.
2. A student shall not be entitled to claim refund of tuition fees, if he leaves the college or the institution after the last date of admission to such college/Institution and no substitutional admission is done to that seat.
3. On cancellation of admission, the student from reserved category will have to pay the fees as per university rules.
4. All Deposits such as Caution Money, Library Deposit, Laboratory Deposit, etc. shall be refundable subject to such deductions as may be necessary on account of any damage to the property of the institution concerned such as breakages to Laboratory equipment, loss of library books etc. for which a student is

found responsible. [The application for refund of such deposits shall be made within six months either from the date he/ she leaves the college or completes the course and the said institution shall refund the amount within 30 days from the date of receipt of application.]

5. Only tuition fees and no other fees shall be refundable.
6. If a student gets his admission at another college or institution providing courses different from those in the College or the institution to which he had first sought admission and paid tuition fees provided that he has kept the authorities of such a college or the institution informed in time about his application for admission to another college or institution. The application for refund of tuition fees in such cases must be forwarded through the Principal of the College or Institution which the student actually joins, giving pertinent details such as the course selected by him, the date of his application for admission to the college or institution concerned, the date of his admission to the college or institution, etc.
7. In the case of a student, who fails to inform the authorities of the college or the institution to which he has been given admission, about his intention to leave or change the college or the institution, such authorities shall be entitled to charge full fees for the term or the year, as the case may be.
8. These rules shall not be applicable to colleges/ institutions run by the State Government.
9. Last date for the admission to the P.G. Courses will be given at time of counselling. However in specific cases admission may be granted upon approval from Hon'ble Vice-Chancellor.

**Reservations for different categories as per the Government policy:**

1. Scheduled Caste and Scheduled Caste persons who have adopted Buddhism (SC) - 13 %
2. Scheduled Tribe (ST) - 7 %
3. De-notified Tribes (14 Similar Tribes) (VJ/DT) A - 3 %
4. Nomadic Tribes (28 Tribes before January 1990 and similar tribes) (NT-1) B - 2.5 %
5. Nomadic Tribes (Dhanagar and Similar Tribes) (NT-2) C - 3.5 %
6. Nomadic Tribes (Vanjari and Similar Tribes) (NT-3) D - 2 %
7. Other Backward Class (OBC) - 19 %
8. Economically weaker sections (EWS) - 10 %
9. Special Backward Class (SBC) - 2%
  - 2% seats are available for SBC category if seats from reserve category remain vacant at the time de- reservation.
  - In the 40 % seats of the Open Category and 60 % seats of the Reserved Categories, for the following type of candidates shown percentage of seats will be independently reserved (Internal Reservation).
- Candidate having a certificate from Civil Surgeon specifying that the candidate is physically handicapped and having minimum 40 % disability – 5 % quota.(27 August, 2018).
- Son/Daughter/Husband/Wife of Active Military Services Personnel and Ex. Military Services Personnel and Ex-Serviceman Personnel himself- 2 % quota.

(Note- This being the internal reservation, seats will be filled on merit in the beginning only. Correspondingly the number of seats will be reduced from the respective categories.)

- **If any seats remain vacant in reserve category it will be filled through following interchangeability process mentioned below:**

Group 1	I.	Scheduled Caste and Scheduled Caste persons who have adopted Buddhism (SC)	II.	Scheduled Tribes (ST)
Group 2	I.	De-notified Tribes (VJ) (A)	II.	Nomadic Tribes (B)
Group 3	I.	Nomadic Tribes (C) Other Backward Castes (OBC)	II.	Nomadic Tribes (D)

- After following the admission rule, if some seats still remain vacant then those will be filled on the basis of a consolidated merit list of all remaining backward class candidates.
- After this, if some seats reserved for backward class remain vacant, they will be filled from the merit list of open category candidates.

## General Instructions

Students of this University must submit their transference Certificate (From the college last attended) before the last date of admission without fail.

1. Students should apply for an Eligibility Certificate after their admission to this University.
2. Every student must arrange to have an identity proof at the time of his/her admission.
3. Seats are reserved for students belonging to Scheduled Castes, Scheduled Tribes etc. as per the Resolution passed by the State Government from time to time.
4. No application form for admission to an examination will be accepted unless all dues are cleared by the student.
5. Concession for the wards of Kashmiri migrants will be given as per government of India Minister of Human Resource Department letter dated 15 October, 2019.
6. 10% Seats of total intake capacity will be admitted from Ex-servicemen / Defense personnel wards as per Government of Maharashtra, Department of education and employment circular dated 13/06/1995.

## Disciplinary Rules

As per Section 127 (1) of the Maharashtra Public Universities Act, 2016, the rules of discipline and proper conduct of the students of the University Department, affiliated colleges, recognized institutions, autonomous college/ institutions shall be as follows:

1. As part of discipline, students are required to attend functions, celebrating Days of National Importance.
2. The students shall attend the classes, practical and seminars, etc. whenever prescribed, regularly so that the requirements of minimum attendance as prescribed under the Act, the Statutes, the ordinances and rules/regulations made in that behalf are fulfilled.

3. It shall be binding on the part of the students to see that no damage is done to the property of the concerned institution in any manner.
4. Code of Conduct in short:
  - a. The students shall behave with their classmates, teachers, authorities and the non-teaching employees of the concerned institutions in a responsible manner.
  - b. The student shall behave in a fair and friendly manner in all extra and co-curricular activities.
  - c. The student shall participate in Educational tours, Youth festivals and other collective activities wherever prescribed in a constructive manner, ensuring fulfillment of the objectives of the said activity under strict supervision and guidance of the teachers/officers/authorities of the concerned institutions.
  - d. It shall be obligatory on the part of the students to make a proper use of the Laboratory/Library/Study Room and other common facilities without causing inconvenience or damage to the other users, and the property.
5. The resident students shall be governed by the rules and regulations in respect of hostel accommodation/official premises as prescribed by the concerned institution.
6. The students involved in any attempt of common-offs, vulgarism, gundaism, man-handling, eve-teasing, malpractices or participation in criminal acts shall be liable for punishment.
7. Students must not organize / involve in celebrations of any event / programmes / gathering without the prior permission of authority.
8. Prevention of Ragging in Educational Institutions:
  1. The provisions of Anti-Ragging Legislation of the State Government shall govern the students, and / or rules made in this regard from time to time by the concerned institution.
  2. Ragging is any act which violates the dignity of the individual student or is perceived to violate his / her dignity. Broadly ragging can be categorized in following way – i) Verbal Ragging, ii) Severe Verbal Ragging, iii) Physical Ragging, iv) Sexual Ragging

For various types of ragging the punishment such as imprisonment or fine or both is prescribed with expulsion etc, if found guilty of ragging.
9. Anti – Ragging Committee / Squad: Anti Ragging squad has been constituted at University level as per the order of Hon' ble Supreme Court of India (D. No. 370/04/XI/-A dated 18th May, 2007). Ragging in any form is strictly prohibited.
10. Sexual Harassment Prevention Committees: There is a committee constituted for prevention of sexual harassment. Students can take help from the committee for any kind of problem of harassment.
11. All powers relating to disciplinary action against students of the University an affiliated college or recognized institution not mentioned by the University, shall vest in the Principal of the affiliated college or Head of the recognize institution, and the provisions of the foregoing sub- section including the rules, if any made thereunder, shall mutatis mutandis apply to such colleges, institution and students therein.
12. तंबाखु मुक्त महाराष्ट्र अभियान : विद्यापीठाच्या शंबर याईच्या परिसरात तंबाखूजन्य पदार्थ आणणे, त्याचे सेवन करणे वा विक्री करणे यावर बंदी आहे. याचे उल्लंघन केल्यास रु. २००/- दंड आकारण्यात येईल.

Any breach of the aforesaid rules or any misbehavior on the part of the student shall be liable to be punished severely in accordance with provisions contained in section 127 (3)(4) of the Maharashtra Public Universities Act, 2016.

Important Note : All the courses are full time courses and no candidate is allowed to do any full or part time job during course tenure.



### अंतर्गत तक्रार निवारण समिती (Internal Complaint Committee)

कामाच्या ठिकाणी महिलांचे लैंगिक छळापासून संरक्षण (प्रतिबंध, मनाई आणि निवारण) अधिनियम २०१३ विद्यापीठ अनुदान आयोग UGC (Prevention, Prohibition and Redressal of Sexual Harassment of Women Employees and Students in Higher Education Institutions) Regulation, 2015 (In The Gazette of India dated 2nd May, 2016) विद्यापीठ प्राधिकरणाने खालीलप्रमाणे अंतर्गत तक्रार निवारण समिती (Internal Complaint Committee) गठीत केली आहे.

#### अंतर्गत तक्रार निवारण समिती

अ. क्र.	अध्यक्ष/सदस्यांचे नाव	समितीतील पदनाम	ई-मेल	मोबाईल नंबर
१)	मा. डॉ. श्रीमती एम. डॉ. गायकवाड, प्राचार्या, वसुंधरा कला महाविद्यालय, सोलापूर	अध्यक्षा	drmeenagaikwad@gmail.com	९६०४११४८५८
२)	मा. डॉ. श्रीमती एस. व्ही. राजमान्य प्राचार्या, संगमेश्वर महाविद्यालय, सोलापूर	सदस्या	v.rajmanya@yahoo.com	९४०३६९१२१५
३)	मा. अॅड. श्रीमती एन. एस. मंकणी, सोलापूर	सदस्या	neetamankani@gmail.com	९४०३२९५६०२
४)	मा. डॉ. पी. जी. व्हनकडे, सहायक प्राध्यापक, सामाजिकशास्त्र संकुल, पुअहोसोविसो	सदस्य	pgvhankade@sus.ac.in	९७६२५३६८०६
५)	मा. सौ. ए. आर. मोहरीर (आडगांवकर) वरिष्ठ लिपीक, पुअहोसोविसो	सदस्या	asadgaonkar@sus.ac.in	९८२२१९००३०
६)	मा. श्री. एस. आर. काळे, वरिष्ठ लिपीक, पुअहोसोविसो	सदस्य	sharankale@gmail.com	९०९६१८८३५४



## **Nature of question paper for entrance test of M. Sc. Courses**

### **Scheme of Examination**

- Total Marks: 100
- 100 Multiple Choice Questions, each carries 1 mark.
- For M. Sc. Entrance Examination syllabus will be based on appx 80% of B. Sc. – III, and 20% questions will be from previous knowledge about the subject.
- The entrance examination will be conducted in online mode.

### **Nature of question paper for entrance test of M.Sc. Computer Science:**

- Total Marks: 100
- 100 Multiple Choice Questions, each carries 1 mark.
- Questions will be based on English Grammar, Quantitative aptitude, Introduction to Computers, Introduction to C and C++.
- The entrance examination will be conducted in online mode.

### **Nature of question paper for entrance test of M. A. Courses:**

- The entrance examination comprises the General Aptitude Test of 100 marks.
- The entrance examination will be conducted in online mode.

## Eligibility required for Various Courses


Sr. No	Name of the course	Eligibility
1.	M.Sc. Physics (Appl. Electronics, Materials Science, Condensed Matter Physics), M.Sc Physics (Nano Physics), M.Sc Physics (Solid State), M.Sc Physics (Energy Studies)	B.Sc. with Physics as Principal Subject / Physics at Subsidiary level
2.	M.Sc. Electronic Science/M.Sc. Electronics	B.Sc with Electronics as a Principal subject / Electronics at subsidiary level / Applied Electronics as a principal Subject / B. Sc. Physics with Electronics at subsidiary level
3.	M.Sc. Chemistry (Polymer, Industrial, Organic, Physical, Inorganic, Analytical, Medicinal Chemistry, Pharmaceutical)	B.Sc. with Chemistry as a principal Subject / Chemistry at Subsidiary level
4.	M.Sc. Applied Geology	B.Sc. with Geology as Principal Subject / Geology at Subsidiary Subject.
5.	M.Sc. Geoinformatics	B.Sc./ M.A. Geography
6.	M.Sc. Environmental Science	B.Sc. (any Subject)/ B.Sc. Agri/ Biotechnology/ Bio – Chemistry/ Entrepreneurship (Candidates from waiting list of Chemistry may also be considered)
7.	M.Sc. Computer Science	B.Sc Computer Science /B.C.S./B.Sc (ECS)/ BCA under Science Faculty (With Science at 10 +2 level ) / B.Sc.(Mathematics /Electronics/ Statistics)
8.	M.Sc. Mathematics	B.Sc. With Mathematics as Principal Subject / Mathematics at subsidiary level
9.	M.Sc. Statistics	B.Sc.with Statistics as Principal Subject / Statistics at subsidiary Level
10.	M.Sc. Biostatistics	Any Science Graduate (having Mathematics at 10+2 Level) / B.E./ B.Tech.
11.	M.Sc. Microbiology	B.Sc.with Microbiology as a Principal Subject / Microbiology at subsidiary Level /B.Sc Biotechnology

<b>Sr. No</b>	<b>Name of the course</b>	<b>Eligibility</b>
12.	M.Sc. Botany	B.Sc. with Botany as a Principal Subject / Botany at subsidiary Level/B.Sc Agriculture/ B.Sc Biotechnology
13.	M.A./M.Sc. (Geography)	B.Sc/ B.A with Geography as a Principal Subject / Geography at subsidiary Level
14.	M.Sc. Bioinformatics	B.Sc./ B.E. /B.Tech. /M.B.B.S /B.V.S.C/ B.Pharm/ B.Sc Entrepreneurship
15.	M.Sc. Genetics	B.Sc. / B.Sc Agriculture/ M.B.B.S/ B.Pharm / B.Sc Entrepreneurship
16.	M.Sc Biotechnology	B.Sc with Chemistry /Zoology /Botany / Microbiology /Biochemistry/ Biotechnology/ Entrepreneurship
17.	M.Sc. Zoology	B.Sc.with Zoology as a Principal Subject/ Zoology at subsidiary
18.	M.Sc. Nanotechnology	B.Sc with Chemistry / Physics/ Electronics / Botany / Biotechnology /Zoology / Microbiology / Biochemistry/ B.Pharm/ B.Tech / B.Sc Agri/ MBBS/ B.E/ B.Sc Entrepreneurship
19.	M.Sc. Agrochemical and pest management	B.Sc.with Chemistry / Zoology / Botany / Microbiology/ B.Sc.Aгри/ Biotechnology/ Bio – Chemistry/ Horticulture / Plant Protection/ Entrepreneurship /B.Pharm
20.	M.Com	B.Com/ B.B.A/ M.B.A/ B.C.A
21.	M.A Economics	B.A with Economics as Principle Subject/ Economics at Subsidiary level / B.Com
22.	M.A History	B.A with History or A.I.H &C as Principle Subject/History or A.I.H & C Subsidiary level
23.	M.A Sociology	B.A with Sociology as principle subject / Sociology at Subsidiary level
24.	M. C. A.	As per state government and A.I.C.T.E. norms.
25.	M.A. History and Archaeology	Graduate in any discipline
26.	M.A. Rural Development	Graduate in any discipline
27.	M.A. Mass Communication	Graduate in any discipline


<b>Sr. No</b>	<b>Name of the course</b>	<b>Eligibility</b>
28.	M. A. (Marathi, Hindi, English, Prakrit, Sanskrit, Urdu, Pali, Kannada.)	Graduate in any discipline
29.	M.Sc. Entrepreneurship	B.Sc. With Principal subject –Entrepreneurship, Chemistry, Biotechnology , Agriculture, Agriculture Biotechnology , Botany, Zoology, Microbiology , Bioinformatics Biochemistry, B. Pharmacy, Agri Business Management and Plant protection
30.	Five Years Integrated M.Tech. Course in Cosmetic Technology	Students with 12 <sup>th</sup> science background with Biology Subject.
31.	Post Graduate Diploma in Dietetics and Nutrition	Any Medical, AYUSH, Nursing, Science, Life Science Graduate, B. P. Ed, BA Physical Education
32.	M. A. (Yoga)	Any Graduate
33.	M.B.A.	Any Graduate As per state government and A.I.C.T.E. norms.



## Schedule of Entrance Examination



**Punyashlok Ahilyadevi Holkar Solapur University, Solapur**  
**ADMISSION NOTIFICATION 2021-22**



Phone: 0217-2744771 / 78. Ext.115

Website: <http://su.digitaluniversity.ac>  
<http://www.sus.ac.in/>

The candidates (graduated from any University recognized by the U.G.C.) desirous of seeking admission to the following courses should apply online to the Registrar, Punyashlok Ahilyadevi Holkar Solapur University, Solapur from 27/07/2021 to 14/08/2021. Online Computer Based Entrance Examination fees of Rs.400/- should be remitted online as per the instructions on the website. The prospectus may be downloaded from the University website <https://su.digitaluniversity.ac/Content.aspx?ID=4> (**Admission and Eligibility**)

Candidates who wish to appear for more than one course should pay Rs.150/- for each additional course. The students from reserved category are eligible to avail freeships / scholarships offered by the Government of India and Government of Maharashtra as per the norms.

Candidates who passed/ appeared for the final examination may apply.

Name of the Course	Date and Time of Online Entrance Exam	
<b>School of Physical Sciences</b>		
1) M.Sc. Physics (Applied Electronics)	24/08/2021	10:00 to 12:00 noon
2) M.Sc. Physics (Materials Science)		
3) M.Sc. Physics (Condensed Matter Physics)		
4) M.Sc. Physics (Energy Studies)		
5) M.Sc. Electronic Science		1:00 to 3:00 pm
<b>School of Chemical Sciences</b>		
1) M.Sc. Chemistry (Polymer, Organic, Industrial, Medicinal Chemistry)	25/08/2021	10:00 to 12:00 noon
<b>School of Earth Sciences</b>		
1) M.Sc. Environmental Science	25/08/2021	4:00 to 6:00 pm

Name of the Course	Date and Time of Online Entrance Exam	
School of Computational Sciences		
1) M.Sc. Computer Science	26/08/2021	10:00 to 12:00 noon
2) M.Sc. Mathematics		1:00 to 3:00 pm
3) M.Sc. Statistics	25/08/2021	10:00 to 12:00 noon
4) M.Sc. Bio-Statistics		1:00 to 3:00 pm
School of Social Sciences		
1) M.A. Mass Communication	25/08/2021	1:00 to 3:00 pm
School of Life Sciences		
1) M.Sc. Microbiology	24/08/2021	10:00 to 12:00 noon
P.G. Courses offered at affiliated Colleges		
1) M.Sc. Microbiology, Physics (Solid State) & Physics (Nano-physics)	24/08/2021	10:00 to 12:00 noon
2) M.Sc. Electronics		1:00 to 3:00 pm
3) M.Sc. Botany & M.A/M.Sc. Geography		4:00 to 6:00 pm
4) M.Sc. Chemistry (Organic, Inorganic, Physical, Analytical, Pharmaceutical)	25/08/2021	10:00 to 12:00 noon
5) M.Sc. Computer Science	26/08/2021	10:00 to 12:00 noon
6) M.Sc. Zoology / Mathematics		1:00 to 3:00 pm
7) M.Sc. Agrochemical and Pest Management		4:00 to 6:00 pm
8) M.Sc. Biotechnology/ Genetics/ Bioinformatics	27/08/2021	10:00 to 12:00 noon
9) M.Sc. Nanotechnology		1:00 to 3:00 pm
10) M.Sc. Entrepreneurship		

**Important Note :**

1. The instruction manual for program of Online Exam and online practice/mock test is available on university website- <http://su.digitaluniversity.ac/Admission> & Eligibility/
2. Actual time of Online Computer Based Entrance Examination is 120 minutes. The first half an hour is reserved for the students to familiarize with the Online Computer Based Entrance Examination and for mock test.
3. Exam Center allocation for the students is on a first come first serve basis.
4. No spot registrations for the Entrance Examination.

Place : Solapur/47

Date: 26/07/2021

Prof. Dr. Vikas Ghute

I/c Registrar

## Admission Schedule

ADMISSION SCHEDULE 2021-22				
Name of the Course	Date and Time of Online Entrance Exam	Counseling date		Spot Admission
		First Round	Second Round	
School of Physical Sciences				
M.Sc. Physics (Applied Electronics)	24/08/2021, 10:00 to 12:00 noon	13/09/2021	20/09/2021	27/09/2021
M.Sc. Physics (Materials Science)				
M.Sc. Physics (Condensed Matter Physics)				
M.Sc. Physics (Energy Studies)				
M.Sc. Electronic Science	24/08/2021, 1:00 to 3:00 pm			
School of Chemical Sciences				
M.Sc. Chemistry ( Polymer , Organic, Industrial, Medicinal Chemistry)	25/08/2021, 10:00 to 12:00 noon.	14/09/2021	21/09/2021	28/09/2021
School of Earth Sciences				
M.Sc. Environmental Science	25/08/2021, 4:00 to 6:00 pm	14/09/2021	21/09/2021	28/09/2021
School of Computational Sciences				
M.Sc. Computer Science	26/08/2021, 10:00 to 12:00 noon	15/09/2021	22/09/2021	29/09/2021
M.Sc. Mathematics	26/08/2021, 1:00 to 3:00 pm			
M.Sc. Statistics	25/08/2021, 10:00 to 12:00 noon	14/09/2021	21/09/2021	28/09/2021
M.Sc. Bio- Statistics	25/08/2021, 1:00 to 3:00 noon			

School of Life Sciences				
M.Sc. Microbiology	24/08/2021, 10:00 to 12:00 noon	13/09/2021	20/09/2021	27/09/2021
School of Social Sciences				
M.A. Mass Communication	25/08/2021, 1:00 to 3:00 pm	14/09/2021	21/09/2021	28/09/2021
P.G. Courses offered at affiliated Colleges				
M.Sc. Microbiology	24/08/2021, 10:00 to 12:00 noon	13/09/2021	20/09/2021	27/09/2021
M. Sc. Electronics	24/08/2021, 1:00 to 3:00 pm			
M.Sc. Physics (Solid State)	24/08/2021, 10:00 to 12:00 noon			
M.Sc. Physics (Nano-physics)				
M.Sc. Botany	24/08/2021, 4:00 to 6:00 pm			
M.A. / M.Sc. Geography				
M.Sc. Chemistry (Physical, Analytical, Inorganic, Pharmaceutical)	25/08/2021, 10:00 to 12:00 noon	14/09/2021	21/09/2021	28/09/2021
M.Sc. Computer Science	26/08/2021, 10:00 to 12:00 noon	15/09/2021	22/09/2021	29/09/2021
M.Sc. Zoology	26/08/2021, 1:00 to 3:00 pm			
M.Sc. Mathematics	26/08/2021, 1:00 to 3:00 pm			
M.Sc. Agrochemical and Pest Management	26/08/2021, 4:00 to 6:00 pm			
M.Sc. Bioinformatics, Genetics & Biotechnology	27/08/2021, 10:00 to 12:00 noon	15/09/2021	22/09/2021	29/09/2021
M.Sc. Nanotechnology	27/08/2021, 1:00 to 3:00 pm			
M.Sc. Entrepreneurship	27/08/2021, 1:00 to 3:00 pm			



# The Credit System

There can also be ‘non-examination credit’ which a student can earn by demonstrating proficiency in extra-curricular activities such as sports, social service, military service, cultural activities at state, regional, national, international level.

- ❖ **Conversion of marks into grades :** A table for the conversion of the marks obtained by a student in each paper (out of 100) to grade and grade points is given below.

Sr. No.	Range of marks	Grade	Grade Point
1	80-100	O	10
2	70-79	A+	9
3	60-69	A	8
4	55-59	B+	7
5	50-54	B	6
6	45-49	C+	5
7	40-44	C	4
8	<39	FC	0 (Failed in Term End exam)
9	<39	FR	0 (Failed in Internal assessment)

*FC – Failed and allowed to Continue, FR – Failed and Retained*

Calculation of Grade Point Average (GPA)

1. Grade Point Average at the end of a semester (SGPA)

$$(G1 \times C1) + (G2 \times C2) + \dots$$

$$SGPA = \frac{\quad}{\sum Ci \text{ (i.e. the total number of credits offered by the student during semester)}}$$

2. Cumulative Grade Point Average (CGPA)

$$(G1 \times C1) + (G2 \times C2) + \dots$$

$$CGPA = \frac{\quad}{\sum Ci \text{ (i.e. the total number of credits offered by the student upto and including the semester for which CGPA is calculated.)}}$$

- Final Grade Point Average (FGPA) will be calculated in the similar manner for the total number of credits offered for completion of the said course.

Where:  $C_i$ : Credits allocated for the  $i^{\text{th}}$  course

$G_i$ : Grade point scored in  $i^{\text{th}}$  paper (Subject)

### ❖ Conversion of average grade points into grades:

The student's performance of a course will be evaluated by assigning a letter grade on ten points scale as given below:

Sr. No.	SPGA / CGPA / FGPA	Letter Grade	Sr. No.	SPGA / CGPA / FGPA	Letter Grade
1	9.5 – 10	O	5	5.5 - 6.4	B
2	8.5 - 9.4	A+	6	4.5 - 5.4	C+
3	7.5 - 8.4	A	7	4.0 - 4.4	C
4	6.5 - 7.4	B+	8	< 3.9	FC / FR

#### ● Scheme of evaluation:

The candidate has to appear for internal evaluation of 20 marks and external evaluation (university exam) for 80 marks for each paper/practical. The nature of internal evaluation will be decided by the respective schools. The internal evaluation is a process of continuous assessment.

#### ● Passing Standard

The student has to secure a minimum of 4.0 grade points (Grade C) in each paper (subject/passing head). A student who secures less than 4.0 grade point (39% or less marks, Grade FC/FR) will be declared fail in that paper (subject) and shall be required either to reappear that paper or clear another paper in lieu thereof irrespective of his/her performance in the rest of the paper/subjects/semester/annual even though he/she may have been awarded FGPA.

A student who failed in Term End examination (theory) & passed in internal assessment of a paper (subject) shall be given FC Grade. Such students will have to appear for Term End examination only. A student who fails in internal assessment and passed in Term End examination (Theory) shall be given FR Grade. Such students will have to appear for Term End examination as well as internal assessment.

In case of year down candidates from the mark scheme the candidates shall appear for the same 70 marks paper of the external examination and his performance shall be scaled to 100 marks.

#### ● ATKT

A student who fails (secures Grade FC/FR) in one fourth (25%) or less of the total papers offered in the first and second semester will be allowed for admission to second year (Sem. III-IV).

#### ● CBCS (Choice Based Credit System)

CBCS is implemented from academic year 2015-16 for courses on the university campus and P.G. courses at the affiliated colleges.

## An overview of the courses/ programs at the University schools

Name of School & Name of the Courses	*Intake Capacity Grantable	**Intake Capacity Non-Grantable	Entrance Exam /Merit based/ Other	Skill Oriented Certificate Courses
School of Chemical Sciences				
1. M Sc. Chemistry (Polymer)	16	04	Entrance Exam	<ul style="list-style-type: none"><li>Instrumental Methods of Analysis</li><li>H.P.L.C</li><li>Food processing</li><li>NMR analysis</li><li>Fermentation Technology</li><li>Textile Chemistry</li></ul>
2. M Sc. Chemistry (Organic)	0	40		
3. M Sc. Chemistry (Industrial)	0	25		
4. M.Sc. Medicinal Chemistry	0	20		
School of Earth Sciences				
1. M.Sc. Applied Geology	16	04	No Entrance Exam	<ul style="list-style-type: none"><li>Environmental Law</li><li>Metamorphic Petrology</li><li>Ecology &amp; Environmental Pollution</li><li>Population Environmental &amp; Dev.</li><li>Disaster Management</li><li>Environmental Informatics</li></ul>
2. M.Sc. Geoinformatics	0	24		
3. M. Sc. Environmental Science	0	24	Entrance Exam	
School of Physical Sciences				
1. M.Sc. Physics (Applied Electronics)	20	00	Entrance Exam	<ul style="list-style-type: none"><li>PCB Design</li></ul>
2. M. Sc. Electronic Science	0	20		
3. M. Sc. Physics (Materials Science)	0	20		
4. M. Sc. Physics (Condensed Matter Physics)	0	20		
5. M. Sc. Physics (Energy Studies)	0	20		

School of Computational Sciences				
1. M. Sc. Mathematics	40	10	Entrance Exam	<ul style="list-style-type: none"><li>● Cyber Laws</li><li>● Arterial Science Diploma</li><li>● Robotics</li><li>● Animation and Graphics</li><li>● R Languages</li><li>● S.P.S.S</li></ul>
2. M. Sc. Statistics	20	10		
3. M.Sc. Biostatistics	0	20		
4. M. Sc. Computer Science	0	20		
5. M.C.A.	0	60	As per A.I.C.T.E Rules	
School of Life Sciences				
1. M.Sc.Microbiology	0	20	Entrance Exam	
School of Allied Health Sciences				
1. M. A. (Yoga)	0	30	No Entrance Exam	<ul style="list-style-type: none"><li>● Diploma Course of Yoga Teacher</li><li>● Acupressure</li></ul>
2. PG Diploma in Dietetics & Nutrition	0	30		
School of Social Sciences				
1. M.A. Mass Communication	0	30	No Entrance Exam	<ul style="list-style-type: none"><li>● Agro-Tourism</li><li>● Share Market</li><li>● Anchoring (Radio /T/ V/ Event)</li><li>● Documentary/Short Film Making</li></ul>
2. M.A. A.I.H.C. & Archaeology	40	0		
3. M.A. Rural Development	0	24		
4. M.A. Economics	0	30		
5. B. Voc. Journalism and Mass Communication	0	50		
School of Commerce of Management				
1. M.Com	0	90	No Entrance Exam	<ul style="list-style-type: none"><li>● Tally ERP</li></ul>
2. M.B.A	0	120	As per A.I.C.T.E Rules	

Name of School & Name of the Courses	*Intake Capacity Grantable	**Intake Capacity Non-Grantable	Entrance Exam /Merit based/ Other	Skill Oriented Certificate Courses
School of Languages and Literatures				
1. M.A. Marathi	0	24	No Entrance Exam	<ul style="list-style-type: none"><li>Sanskrit Language</li><li>Communication Skill</li><li>Translation</li><li>German Language</li></ul>
2. M.A. Hindi	0	24		
3. M.A. English	0	24		
4. M.A. Sanskrit	0	24		
5. M.A. Urdu	0	24		
6. M.A. Kannada	0	20		
7. M.A. Pali	0	20		
8. M.A. Pakrut	0	20		
School of Technology				
1. Five Years Integrated M.Tech. Course in Cosmetic Technology	0	30	No Entrance Exam	<ul style="list-style-type: none"><li>Textronics</li></ul>
School of Performing Arts				
1. M.A. Music	0	20	No Entrance Exam	<ul style="list-style-type: none"><li>Sugam Sangit</li><li>Photography</li></ul>
2. M.A. Dramatics	0	20		
3. M.A. Tabla	0	20		

## ❖ Certificate Courses Under University Skill Development Centre

The Punyashlok Ahilyadevi Holkar Solapur University, Solapur offers various Certificate Courses Under Skill Development Centre Academic Year 2021 – 2022

**All List of Courses and Eligibility, Fee Details:** [Click Here to view all List of Courses](#)

**For any more information :** [Click Here](#)



## P. G. Courses offered at Affiliated Colleges

Sr.No	Name of the College	Name of the Course	Intake
1.	D. B. F. Dayanand College of Arts and Science, Solapur Phone No. 0217-2323193 Mail ID- <a href="mailto:spr_dayartsc@live.com">spr_dayartsc@live.com</a> <a href="mailto:dayasolapur@gmail.com">dayasolapur@gmail.com</a> website- <a href="http://www.dayanandsolapur.org">www.dayanandsolapur.org</a>	M.Sc. Physics (Solid State)	25
		M.Sc. Chemistry Pharma. Chem	25
		M.Sc. Chemistry (Physical Chemistry)	20
		M. Sc. (Botany)	20
		M. Sc. (Zoology)	20
		M. Sc. (Mathematics)	30
		M.A / M. Sc (Geography)	50
		M.Sc Microbiology	30
		M. Sc. (Organic Chemistry)	30
2.	Shankarrao Mohite Mahavidyalaya, Akluj Phone No. 02185-222088 Mail ID- <a href="mailto:smnakj@yahoo.com">smnakj@yahoo.com</a> Website- <a href="http://smmakluj.ac.in">http://smmakluj.ac.in</a>	M. Sc (Agrochemical and Pest Management)	24
		M. Sc (Electronics)	24
3.	Shri. Shivaji Mahavidyalaya, Barshi Phone No. 02184-222382 Mail ID- <a href="mailto:ssmb_barshi@rediffmail.com">ssmb_barshi@rediffmail.com</a> Website- <a href="http://www.ssmbarshi.org.in/">http://www.ssmbarshi.org.in/</a>	M. Sc. (Microbiology)	24
		M.A / M. Sc (Geography)	50
		M.Sc. Botany	25
		M.Sc. Zoology	20
		M. Sc. (Nano-Physics)	20
		M. Sc. (Analytical Chemistry)	25
4.	Sangola Mahavidyalaya, Sangola Phone No-02187-220227 Mail ID- <a href="mailto:prinscsgl@gmail.com">prinscsgl@gmail.com</a> Website- <a href="http://sangolacollege.org/">http://sangolacollege.org/</a>	M. Sc. (Computer Science)	60
		M.Sc. (Organic Chemistry)	25
5.	Greenfingers College of Computer and Technology, Akluj Phone No- 02185-223225 Mail <a href="mailto:ID-gfc_akluj@yahoo.com">ID-gfc_akluj@yahoo.com</a>	M. Sc. (Computer Science)	20

Sr.No	Name of the College	Name of the Course	Intake
6.	Shriram Institute of Information Technology, Paniv Phone No. 02185-274011 Mail ID- <a href="mailto:siitpaniv@gmail.com">siitpaniv@gmail.com</a> Website- <a href="http://www.siitpaniv.org/">www.siitpaniv.org/</a>	M. Sc. (Computer Science)	30
7.	Vidnyan Mahavidyalaya, Sangola Phone No- 02187-220508 Mail ID- <a href="mailto:vidnyanms@yahoo.co.in">vidnyanms@yahoo.co.in</a> Website- <a href="http://vmssangola.org/">vmssangola.org/</a>	M. Sc. (Computer Science)	25
8.	V. G. Shivdare College of Arts, Commerce, Science, Solapur Phone No. 0217-2303411 Mail ID- <a href="mailto:vgs.biotechnology@rediffmail.com">vgs.biotechnology@rediffmail.com</a> website http: <a href="http://www.vgshivdarecollege.org">www.vgshivdarecollege.org</a>	M. Sc. (Biotechnology)	30
9	Deshbhakta Sambhajirao Garad Mahavidyalaya, Mohol Phone No- 02189- 232208 Mail ID- <a href="mailto:dsgarad@gmail.com">dsgarad@gmail.com</a> Website- <a href="http://dsgaradcollegemohol.org/">dsgaradcollegemohol.org/</a>	M. A. (Geography – Marathi Medium)	50
10.	Walchand College of Arts and Science, Solapur  Phone No. 0217-2651863 Mail ID- <a href="mailto:prnicipalwcas@yahoo.co.in">prnicipalwcas@yahoo.co.in</a> Website- <a href="http://wcassolapur.org/">http://wcassolapur.org/</a>	M. Sc. (Bioinformatics)	25
		M. Sc. (Genetics)	25
		M. Sc. (Inorganic Chemistry)	25
		M. Sc. (Biotechnology)	25
		M.Sc. Nano-Technology	25
		M. A. (Geography – Marathi Medium)	50
11.	Lokmangal Science & Entrepreneurship College, Wadala Phone No. 0217-2246468 Mail ID- <a href="mailto:lokmandal.gargi@gmail.com">lokmandal.gargi@gmail.com</a> Website- <a href="http://lokmandalagrillbiotech.org/">http://lokmandalagrillbiotech.org/</a>	M. Sc. (Biotechnology)	24
		M.Sc. (Entrepreneurship)	24
12.	Sangameshwar College, Solapur Saat Rasta, Solapur Phone No : 0217- 2315588 Website: <a href="http://www.sangameshwarcollege.ac.in/">http://www.sangameshwarcollege.ac.in/</a>	M. Sc. (Inorganic Chemistry)	25

## Phone Numbers for Contact

University Phone Numbers		
(0217- 2744763, 66-67, 2744771-74, 78-79, 2351489)		
Contact Numbers of Campus Schools having P. G. Courses		
Sr. No.	Name of the School	Extension No.
1.	School of Chemical Sciences	148, 149, 150,152
2.	School of Computational Sciences	302, 303, 304, 306, 313, 309
3.	School of Earth Sciences	249, 245, 246
4.	School of Physical Sciences	142,143 144, 145, 147 184, 202
5.	School of Social Sciences	226, 229,236,239
6.	Department of Commerce and Management	235, 237
7.	School of Languages and Literature	234
8.	School of Allied Health Science	228,238
9.	School of Technology	149
10.	School of Performing Arts	234
11.	School of Life Sciences	149
12.	P.G. Admission Section	113, 115
Contact Numbers of Affiliated Colleges having P. G. Courses		
Sr. No.	Name of the College	Extension No.
1	D. B. F. Dayanand College of Arts and Science, Solapur	0217 – 2323193
2	Walchand College of Arts and Science, Solapur	0217 - 2651863

<b>Sr. No.</b>	<b>Name of the College</b>	<b>Extension No.</b>
3	V. G. Shivdare College of Arts, Commerce, Science, Solapur	0217 – 2303411
4	Shankarrao Mohite Mahavidyalaya, Akluj	02185 -222088
5	Shri. Shivaji Mahavidyalaya, Barshi	02184-222382
6	Sangola College, Sangola	02187-220227
7	Vidnayan Mahavidyalaya, Sangola.	02187 - 220508
8	Green Fingers College of Computer and Technology,Akluj	02185 – 223225
9	Shriram Institute of Information Technology, Paniv	02185 - 274011
10	Deshbhakta Sambhajirao Garad Mahavidyalaya, Mohol	02189 – 232208
11	Lokmangal Science And Entrepreneurship College, Wadala	0217 - 2735525
12	Sangameshwar College, Solapur	0217 - 2315588

# Fees

**PUNYASHLOK AHILYADEVI HOLKAR SOLAPUR UNIVERSITY, SOLAPUR**  
**(FEES STRUCTURE OF ALL COURSES wef 2021-22)**  
**(Fee Fixation Committee Meeting Dt. 20/05/2021 & Academic Council Meeting Dt. 05/07/2021)**

Sr.No	Course ID	Course Name	Is Professional	Course Duration	Tuition Fees		Laboratory Fee		Govt. Other Fees															University Other Fees						Total Fees	
					Granted	Non-Granted	Granted	Non-Granted	Admission Fee	Library Fee	Gymkhana	Extra Curriculum Activity	College Magazine	Computer Training	Registration Charges	University Development Fund	University Sports Fund/Pro-Rata	University Krida Mohotsav	University Medical Aid Fund	Apathalin Nidhi/University Student Assistance Welfare Fund	** University Student Insurance Fund	** Youth Festival	Student ID Charges	College Development Fund	** E-Suvidha	Fuel Charges	Alumni Association Fee	Democracy, Election & Good Governance	Environmental Studies	Granted	Non-Granted
टिप: (१) '**' ज्या अभ्यासक्रमांचे शुल्क शासनामार्फत ठरविले जातात, त्यानुसार आकारण्यात यावेत, (२) '***' जे शुल्क विद्यापीठाच्या विविध विभागांकडून कळविण्यात येतात, त्यानुसार आकारण्यात यावेत.																															
1	2	3	4	5	6	7	8	9	10	11	12	13	14	15	16	17	18	19	20	21	22	23	24	25	26	27	28	29	30	31	32
1		B.Voc. (Journalism & Masscommunication)	0	I	0	5000	0	600	50	500	150	30	50	150	50	75	60	30	10	10	75	120	50	75	60	50	50	200	0	1845	7445
2		B.Voc. (Journalism & Masscommunication)	0	II	0	5000	0	600	50	500	150	30	50	150	0	75	60	30	10	10	75	120	50	75	60	50	50	0	250	1845	7445
3		B.Voc. (Journalism & Masscommunication)	0	III	0	5000	0	600	50	500	150	30	50	150	0	75	60	30	10	10	75	120	50	75	60	50	50	0	0	1595	7195
4	1206	M.Com.	0	I	2500	2500	0	0	50	500	150	30	50	150	50	75	60	30	10	10	75	120	50	75	60	50	50	0	0	4145	4145
5	1206	M.Com.	0	II	2500	2500	0	0	50	500	150	30	50	150	0	75	60	30	10	10	75	120	50	75	60	50	50	0	0	4095	4095
6	1729	M.Sc. (Applied Electronics)	0	I	1500	0	1500	0	50	500	150	30	50	150	50	75	60	30	10	10	75	120	50	75	60	50	50	0	0	4645	1645
7	1729	M.Sc. (Applied Electronics)	0	II	1500	0	1500	0	50	500	150	30	50	150	0	75	60	30	10	10	75	120	50	75	60	50	50	0	0	4595	1595
8		M.Sc. (Applied Geology)	0	I	1500	0	1500	0	50	500	150	30	50	150	50	75	60	30	10	10	75	120	50	75	60	50	50	0	0	4645	1645
9		M.Sc. (Applied Geology)	0	II	1500	0	1500	0	50	500	150	30	50	150	0	75	60	30	10	10	75	120	50	75	60	50	50	0	0	4595	1595
10		M.Sc. (Bio-Statistics)	0	I	0	4000	0	6000	50	500	150	30	50	150	50	75	60	30	10	10	75	120	50	75	60	50	50	0	0	1645	11645
11		M.Sc. (Bio-Statistics)	0	II	0	4000	0	6000	50	500	150	30	50	150	0	75	60	30	10	10	75	120	50	75	60	50	50	0	0	1595	11595
12	1238	M.Sc. (Computer Science)	0	I	4000	13000	6000	6000	50	500	150	30	50	150	50	75	60	30	10	10	75	120	50	75	60	50	50	0	0	11645	20645
13	1238	M.Sc. (Computer Science)	0	II	4000	13000	6000	6000	50	500	150	30	50	150	0	75	60	30	10	10	75	120	50	75	60	50	50	0	0	11595	20595
14	1239	M.Sc. (Electronic Science)	0	I	0	9000	0	4000	50	500	150	30	50	150	50	75	60	30	10	10	75	120	50	75	60	50	50	0	0	1645	14645
15	1239	M.Sc. (Electronic Science)	0	II	0	9000	0	4000	50	500	150	30	50	150	0	75	60	30	10	10	75	120	50	75	60	50	50	0	0	1595	14595
16	1242	M.Sc. (Environmental Sciences)	0	I	4000	4000	9000	9000	50	500	150	30	50	150	50	75	60	30	10	10	75	120	50	75	60	50	50	0	0	14645	14645
17	1242	M.Sc. (Environmental Sciences)	0	II	4000	4000	9000	9000	50	500	150	30	50	150	0	75	60	30	10	10	75	120	50	75	60	50	50	0	0	14595	14595
18	1254	M.Sc. (Mathematics)	0	I	1500	10000	1500	1000	50	500	150	30	50	150	50	75	60	30	10	10	75	120	50	75	60	50	50	0	0	4645	12645
19	1254	M.Sc. (Mathematics)	0	II	1500	10000	1500	1000	50	500	150	30	50	150	0	75	60	30	10	10	75	120	50	75	60	50	50	0	0	4595	12595
20	1255	M.Sc. (Microbiology)	0	I	0	11000	0	4000	50	500	150	30	50	150	50	75	60	30	10	10	75	120	50	75	60	50	50	0	0	1645	16645
21	1255	M.Sc. (Microbiology)	0	II	0	11000	0	4000	50	500	150	30	50	150	0	75	60	30	10	10	75	120	50	75	60	50	50	0	0	1595	16595
22	1256	M.Sc. (Organic Chemistry)	0	I	7000	7000	7000	7000	50	500	150	30	50	150	50	75	60	30	10	10	75	120	50	75	60	50	50	0	0	15645	15645
23	1256	M.Sc. (Organic Chemistry)	0	II	7000	7000	7000	7000	50	500	150	30	50	150	0	75	60	30	10	10	75	120	50	75	60	50	50	0	0	15595	15595
24		M.Sc. (Physics- Condensed Matter)	0	I	0	4000	0	3000	50	500	150	30	50	150	50	75	60	30	10	10	75	120	50	75	60	50	50	0	0	1645	8645



Sr. No	Course ID	Course Name	Is Professional	Course Duration	Tuition Fees		Laboratory Fee		Govt. Other Fees														University Other Fees						Total Fees		
					Granted	Non Granted	Granted	Non Granted	Admission Fee	Library Fee	Gymkhana	Extra Curriculum Activity	College Magazine	Computer Training	Registration Charges	University Development Fund	University Sports Fund/Pro-Rata	University Krida Mahotsav	University Medical Aid Fund	Apatkalin Nidhi/University Student Assistance Welfare Fund	** University Student Insurance Fund	** Youth Festival	Student ID Charges	College Development Fund	** E-Suridha	Fuel Charges	Alumni Association Fee	Democracy, Election & Good Governance	Environmental Studies	Granted	Non-Granted
टिप: (१) ** ज्या अभ्यासक्रमांचे शुल्क शासनामार्फत ठरविले जातात, त्यानुसार आकारण्यात यावेत. (२) *** जे शुल्क विद्यापीठाच्या विविध विभागांकडून कळविण्यात येतात, त्यानुसार आकारण्यात यावेत.																															
1	2	3	4	5	6	7	8	9	10	11	12	13	14	15	16	17	18	19	20	21	22	23	24	25	26	27	28	29	30	31	32
25		M.Sc. (Physics- Condensed Matter)	0	II	0	4000	0	3000	50	500	150	30	50	150	0	75	60	30	10	10	75	120	50	75	60	50	50	0	0	1595	8595
26	1262	M.Sc. (Statistics)	0	I	1500	0	1500	0	50	500	150	30	50	150	50	75	60	30	10	10	75	120	50	75	60	50	50	0	0	4645	1645
27	1262	M.Sc. (Statistics)	0	II	1500	0	1500	0	50	500	150	30	50	150	0	75	60	30	10	10	75	120	50	75	60	50	50	0	0	4595	1595
28	1266	M.Sc. in Geoinformatics	0	I	4000	4000	9000	9000	50	500	150	30	50	150	50	75	60	30	10	10	75	120	50	75	60	50	50	0	0	14645	14645
29	1266	M.Sc. in Geoinformatics	0	II	4000	4000	9000	9000	50	500	150	30	50	150	0	75	60	30	10	10	75	120	50	75	60	50	50	0	0	14595	14595
30	1267	M.Sc. Industrial Chemistry	0	I	7000	7000	7000	7000	50	500	150	30	50	150	50	75	60	30	10	10	75	120	50	75	60	50	50	0	0	15645	15645
31	1267	M.Sc. Industrial Chemistry	0	II	7000	7000	7000	7000	50	500	150	30	50	150	0	75	60	30	10	10	75	120	50	75	60	50	50	0	0	15595	15595
32		M.Sc. Medicinal Chemistry	0	I	0	7000	0	7000	50	500	150	30	50	150	50	75	60	30	10	10	75	120	50	75	60	50	50	0	0	1645	15645
33		M.Sc. Medicinal Chemistry	0	II	0	7000	0	7000	50	500	150	30	50	150	0	75	60	30	10	10	75	120	50	75	60	50	50	0	0	1595	15595
34		M.Sc. Physics (Energy Studies)	0	I	0	4000	0	3000	50	500	150	30	50	150	50	75	60	30	10	10	75	120	50	75	60	50	50	0	0	1645	8645
35		M.Sc. Physics (Energy Studies)	0	II	0	4000	0	3000	50	500	150	30	50	150	0	75	60	30	10	10	75	120	50	75	60	50	50	0	0	1595	8595
36		M.Tech. Five Years Integrated Course in Cosmetic Technology	0	I	0	9000	0	0	50	500	150	30	50	150	50	75	60	30	10	10	75	120	50	75	60	50	50	200	0	1845	10845
37		M.Tech. Five Years Integrated Course in Cosmetic Technology	0	II	0	9000	0	0	50	500	150	30	50	150	0	75	60	30	10	10	75	120	50	75	60	50	50	0	250	1845	10845
38		M.Tech. Five Years Integrated Course in Cosmetic Technology	0	III	0	9000	0	0	50	500	150	30	50	150	0	75	60	30	10	10	75	120	50	75	60	50	50	0	0	1595	10595
39		M.Tech. Five Years Integrated Course in Cosmetic Technology	0	IV	0	9000	0	0	50	500	150	30	50	150	0	75	60	30	10	10	75	120	50	75	60	50	50	0	0	1595	10595
40		M.Tech. Five Years Integrated Course in Cosmetic Technology	0	V	0	9000	0	0	50	500	150	30	50	150	0	75	60	30	10	10	75	120	50	75	60	50	50	0	0	1595	10595
41		Master of Arts (Applied Economics)	0	I	0	5000	0	0	50	500	150	30	50	150	50	75	60	30	10	10	75	120	50	75	60	50	50	0	0	1645	6645
42		Master of Arts (Applied Economics)	0	II	0	5000	0	0	50	500	150	30	50	150	0	75	60	30	10	10	75	120	50	75	60	50	50	0	0	1595	6595
43		Master of Arts (Drama)	0	I	0	14000	0	1000	50	500	150	30	50	150	50	75	60	30	10	10	75	120	50	75	60	50	50	0	0	1645	16645
44		Master of Arts (Drama)	0	II	0	14000	0	1000	50	500	150	30	50	150	50	75	60	30	10	10	75	120	50	75	60	50	50	0	0	1645	16645
45	1203	Master of Arts (English)	0	I	0	2500	0	0	50	500	150	30	50	150	50	75	60	30	10	10	75	120	50	75	60	50	50	0	0	1645	4145
46	1203	Master of Arts (English)	0	II	0	2500	0	0	50	500	150	30	50	150	0	75	60	30	10	10	75	120	50	75	60	50	50	0	0	1595	4095
47	1182	Master of Arts (Hindi)	0	I	0	2500	0	0	50	500	150	30	50	150	50	75	60	30	10	10	75	120	50	75	60	50	50	0	0	1645	4145
48	1182	Master of Arts (Hindi)	0	II	0	2500	0	0	50	500	150	30	50	150	0	75	60	30	10	10	75	120	50	75	60	50	50	0	0	1595	4095

Sr. No	Course ID	Course Name	Is Professional	Course Duration	Tuition Fees		Laboratory Fee		Govt. Other Fees															University Other Fees						Total Fees	
					Granted	Non Granted	Granted	Non Granted	Admission Fee	Library Fee	Gymkhana	Extra Curriculum Activity	College Magazine	Computer Training	Registration Charges	University Development Fund	University Sports Fund/Pro-Rata	University Krida Mohotsav	University Medical Aid Fund	Apatkalin Nidhi/University Student Assistance Welfare Fund	** University Student Insurance Fund	** Youth Festival	Student ID Charges	College Development Fund	** E-Suvidha	Fuel Charges	Alumni Association Fee	Democracy, Election & Good Governance	Environmental Studies	Granted	Non-Granted
टिप: (१) ** ज्या अभ्यासक्रमांचे शुल्क शासनामार्फत ठरविले जातात, त्यानुसार आकारण्यात यावेत, (२) *** जे शुल्क विद्यापीठाच्या विविध विभागांकडून कळविण्यात येतात, त्यानुसार आकारण्यात यावेत.																															
1	2	3	4	5	6	7	8	9	10	11	12	13	14	15	16	17	18	19	20	21	22	23	24	25	26	27	28	29	30	31	32
49		Master of Arts (Kannada)	0	I	0	2500	0	0	50	500	150	30	50	150	50	75	60	30	10	10	75	120	50	75	60	50	50	0	0	1645	4145
50		Master of Arts (Kannada)	0	II	0	2500	0	0	50	500	150	30	50	150	0	75	60	30	10	10	75	120	50	75	60	50	50	0	0	1595	4095
51	1185	Master of Arts (Marathi)	0	I	0	2500	0	0	50	500	150	30	50	150	50	75	60	30	10	10	75	120	50	75	60	50	50	0	0	1645	4145
52	1185	Master of Arts (Marathi)	0	II	0	2500	0	0	50	500	150	30	50	150	0	75	60	30	10	10	75	120	50	75	60	50	50	0	0	1595	4095
53		Master of Arts (Music)	0	I	0	14000	0	1000	50	500	150	30	50	150	50	75	60	30	10	10	75	120	50	75	60	50	50	0	0	1645	16645
54		Master of Arts (Music)	0	II	0	14000	0	1000	50	500	150	30	50	150	50	75	60	30	10	10	75	120	50	75	60	50	50	0	0	1645	16645
55		Master of Arts (Pali)	0	I	0	2500	0	0	50	500	150	30	50	150	50	75	60	30	10	10	75	120	50	75	60	50	50	0	0	1645	4145
56		Master of Arts (Pali)	0	II	0	2500	0	0	50	500	150	30	50	150	0	75	60	30	10	10	75	120	50	75	60	50	50	0	0	1595	4095
57	1194	Master of Arts (Rural Development)	0	I	5000	5000	0	0	50	500	150	30	50	150	50	75	60	30	10	10	75	120	50	75	60	50	50	0	0	6645	6645
58	1194	Master of Arts (Rural Development)	0	II	5000	5000	0	0	50	500	150	30	50	150	0	75	60	30	10	10	75	120	50	75	60	50	50	0	0	6595	6595
59		Master of Arts (Sanskrit)	0	I	0	2500	0	0	50	500	150	30	50	150	50	75	60	30	10	10	75	120	50	75	60	50	50	0	0	1645	4145
60		Master of Arts (Sanskrit)	0	II	0	2500	0	0	50	500	150	30	50	150	0	75	60	30	10	10	75	120	50	75	60	50	50	0	0	1595	4095
61		Master of Arts (Tabla/Phakwaj)	0	I	0	14000	0	1000	50	500	150	30	50	150	50	75	60	30	10	10	75	120	50	75	60	50	50	0	0	1645	16645
62		Master of Arts (Tabla/Phakwaj)	0	II	0	14000	0	1000	50	500	150	30	50	150	50	75	60	30	10	10	75	120	50	75	60	50	50	0	0	1645	16645
63		Master of Arts (Urdu/Persian)	0	I	0	2500	0	0	50	500	150	30	50	150	50	75	60	30	10	10	75	120	50	75	60	50	50	0	0	1645	4145
64		Master of Arts (Urdu/Persian)	0	II	0	2500	0	0	50	500	150	30	50	150	0	75	60	30	10	10	75	120	50	75	60	50	50	0	0	1595	4095
65	1739	Master of Arts A.I.H.C & Archaeology	0	I	1500	0	1500	0	50	500	150	30	50	150	50	75	60	30	10	10	75	120	50	75	60	50	50	0	0	4645	1645
66	1739	Master of Arts A.I.H.C & Archaeology	0	II	1500	0	1500	0	50	500	150	30	50	150	0	75	60	30	10	10	75	120	50	75	60	50	50	0	0	4595	1595
67	1649	Master of Arts Mass Communication	0	I	5000	5000	0	0	50	500	150	30	50	150	50	75	60	30	10	10	75	120	50	75	60	50	50	0	0	6645	6645
68	1649	Master of Arts Mass Communication	0	II	5000	5000	0	0	50	500	150	30	50	150	0	75	60	30	10	10	75	120	50	75	60	50	50	0	0	6595	6595
69	260	Master of Business Administration (M. B. A.) *	1	I	0	0	0	0	50	500	150	30	50	150	50	75	60	30	10	10	75	120	50	0	60	50	50	0	0	1570	1570
70	260	Master of Business Administration (M. B. A.) *	1	II	0	0	0	0	50	500	150	30	50	150	0	75	60	30	10	10	75	120	50	0	60	50	50	0	0	1520	1520
71		Master of Computer Application (MCA) (2 Year) *	1	I	0	14000	0	7000	50	500	150	30	50	150	50	75	60	30	10	10	75	120	50	0	60	50	50	0	0	1570	22570
72		Master of Computer Application (MCA) (2 Year) *	1	II	0	14000	0	7000	50	500	150	30	50	150	0	75	60	30	10	10	75	120	50	0	60	50	50	0	0	1520	22520



Sr.No	Course ID	Course Name	Is Professional	Course Duration	Tuition Fees		Laboratory Fee		Govt. Other Fees														University Other Fees						Total Fees		
					Granted	Non Granted	Granted	Non Granted	Admission Fee	Library Fee	Gymkhana	Extra Curriculum Activity	College Magazine	Computer Training	Registration Charges	University Development Fund	University Sports Fund/Pro-Rata	University Krida Mahotsav	University Medical Aid Fund	Apatkalin Nidhi/University Student Assistance Welfare Fund	** University Student Insurance Fund	** Youth Festival	Student ID Charges	College Development Fund	** E-Suvidha	Fuel Charges	Alumni Association Fee	Democracy, Election & Good Governance	Environmental Studies	Granted	Non-Granted
टिप: (१) '**' ज्या अभ्यासक्रमांचे शुल्क शासनामार्फत ठरविले जातात, त्यानुसार आकारण्यात यावेत, (२) '***' जे शुल्क विद्यापीठाच्या विविध विभागांकडून कळविण्यात येतात, त्यानुसार आकारण्यात यावेत.																															
1	2	3	4	5	6	7	8	9	10	11	12	13	14	15	16	17	18	19	20	21	22	23	24	25	26	27	28	29	30	31	32
73		Master of Computer Application (MCA) (Science) (3 Year) *	1	I	0	14000	0	7000	50	500	150	30	50	150	50	75	60	30	10	10	75	120	50	0	60	50	50	0	0	1570	22570
74		Master of Computer Application (MCA) (Science) (3 Year) *	1	II	0	14000	0	7000	50	500	150	30	50	150	0	75	60	30	10	10	75	120	50	0	60	50	50	0	0	1520	22520
75		Master of Computer Application (MCA) (Science) (3 Year) *	1	III	0	14000	0	7000	50	500	150	30	50	150	0	75	60	30	10	10	75	120	50	0	60	50	50	0	0	1520	22520
76	1631	MSc In Physics (Material Science)	0	I	4000	4000	3000	3000	50	500	150	30	50	150	50	75	60	30	10	10	75	120	50	75	60	50	50	0	0	8645	8645
77	1631	MSc In Physics (Material Science)	0	II	4000	4000	3000	3000	50	500	150	30	50	150	0	75	60	30	10	10	75	120	50	75	60	50	50	0	0	8595	8595
78	1619	MSc In Polymer Chemistry	0	I	1500	1500	1500	1500	50	500	150	30	50	150	50	75	60	30	10	10	75	120	50	75	60	50	50	0	0	4645	4645
79	1619	MSc In Polymer Chemistry	0	II	1500	1500	1500	1500	50	500	150	30	50	150	0	75	60	30	10	10	75	120	50	75	60	50	50	0	0	4595	4595
80		P.G. Diploma in Dietetics & Nutrition	0	I	0	17100	0	1000	50	500	150	30	50	150	50	75	60	30	10	10	75	120	50	75	60	50	50	0	0	1645	19745